

Overview

The Serial-to-Ethernet module and pcProx IP (RDR-6081AKE) both make use of the same Ethernet module (C-6200AKE) and use the same software utilities from Lantronix. The implementation allows for remote connection and use of any of the RF IDEas serial port based readers (RDR-7x8xAK2 and RDR-6x8xAK2) and Wiegand converter (OEM-W2RS232-v3x). At this time, only the pcProx IP (RDR-6081AKE) reader has this module integrated into the connector. All other RF IDEas manufactured RS-232 readers will use the C-6200AKE module to facilitate the Ethernet connection.:

There are two software utilities included:

1. Device Installer (DL): Used to locate and find the Ethernet based device once you attach it to the network.
2. Serial to Ethernet Redirector (CPR): Re-directs the Ethernet address to the virtual serial (COM) port on the PC running this utility.

The serial port-based RF IDEas reader or converter and its utilities will operate in the same manner with no changes.

Installation

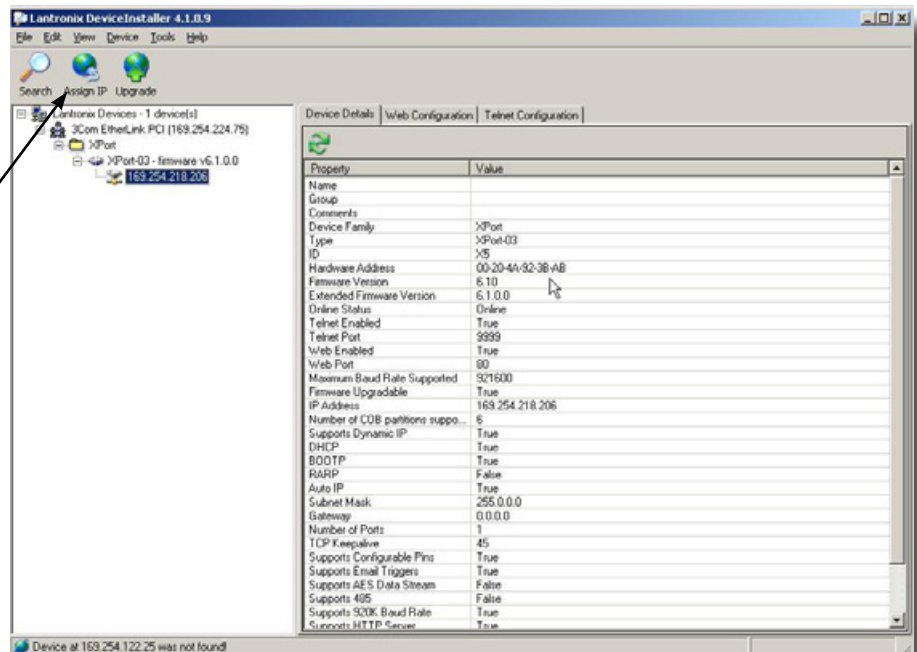
Install these 2 Lantronix software packages from the CD provided;

- DL 4.1.0.9
- CPR4.0

Attach the Reader/Converter to your PC and run the Lantronix Device Installer.

NOTE: Double click on "XPort" to explode the "XPort 03-Firmware V6.1.0.0". Double click on "XPort 03-Firmware V6.1.0.0" to review IP address and the property page will display on the right side of the screen.

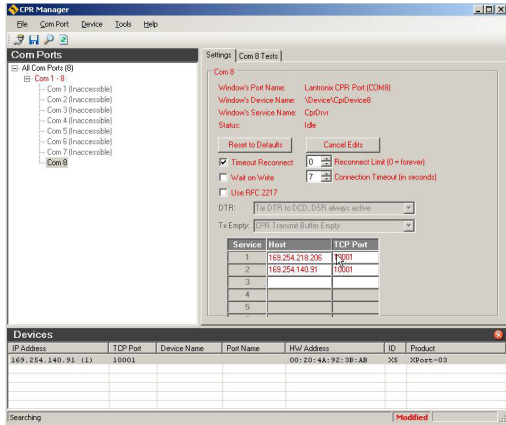
Double Click on "Assign IP" and the "Assign Method" following content (page 2) will display. Default to "obtain an IP address automatically" will default.



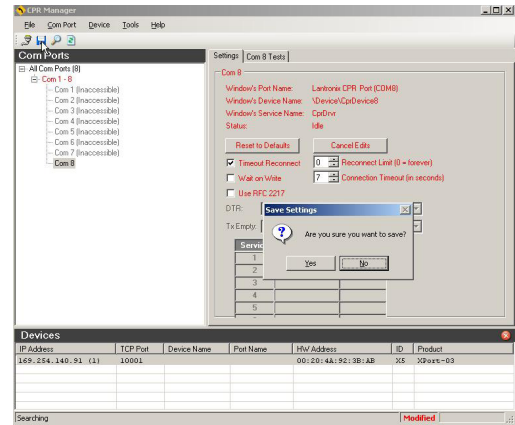
pcProx® IP Reader and Serial-to-Ethernet Converter

For models RDR-6081AKE and C-6200AKE

5. Highlight the IP Address bar in the lower "Devices" window and double click on the address. It will appear on a line of the Service/Host window.



6. You can now use any RF IDEas utility or SDK which supports the RF IDEas serial port-based reader/converter as normal.



Highlight and delete any old IP addresses associated with the Port. Double click on the screen to update the selected IP into line 1.

Go to the upper left corner of the screen and double click on the floppy Drive icon to save the new IP settings and click yes on the pop up Window.

The redirector will redirect all commands and traffic to the designated COM port you chose.