

## Instructions for mounting a pcSwipe™ Magnetic Stripe Reader to the Heavy Base accessory

The heavy base gives the pcSwipe reader a non-slip solid base for better swiping on desktops or other flat surfaces. Its metal base can be securely mounted with screws (not supplied) for additional placement options.



### Kit Contents

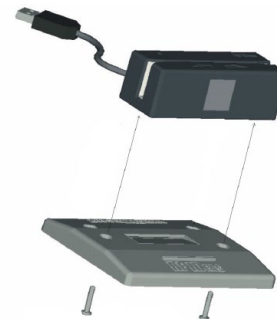
- 1 - Heavy Base
- 2 - #M3X12 Screws
- 1 - Adhesive backed rubber pad
- 4 - Caps (2 keyed, 2 non-keyed)

### Important:

To mount entire reader/base combination to surface, 2 #6 screws (not supplied) will be needed, depending on surface material.

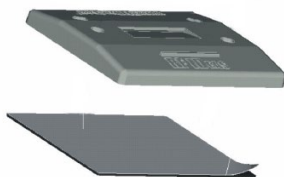
## 1 Connect pcSwipe Unit to Base

Using supplied screws, securely fasten pcSwipe reader to base by threading the screws from bottom through the holes in the flat center portion of the base. Be sure not to overtighten screws.



## 2 Remove Backing and Attach Pad to Base

Remove one side of adhesive backing and place on the bottom of the base as shown below.



## 3 Mount Base on Preferred Surface (optional)

Install #6 size screws (not supplied) to mount base and reader to your preferred surface. Use the supplied keyed caps to cover the screw holes.

