

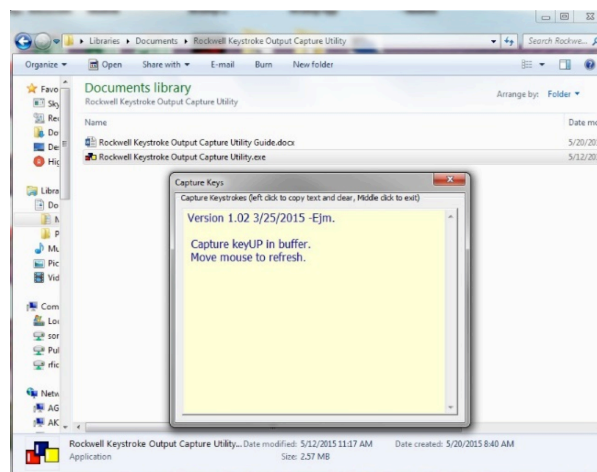
This document provides steps and information to acquire the User ID and Password. This information is applicable to RF Ideas pcProx Plus HMI, IP67 HMI and PLC Rockwell readers with the latest firmware version PLC014300UPX700 CONTROL/ PLR021302.

Note: Make sure your pcProx Plus reader for HMI and PLC is connected before proceeding.

1. Descriptions of mouse movement and mouse click functions with utility

- Left-mouse click copies the screen data to keyboard buffer and clears the screen
- Middle mouse button/wheel click closes the utility
- Any mouse movement dumps the contents of the memory to the utility screen.

2. Initial opening of the utility displays some screen feedback



- Position the mouse cursor in the utility screen area
- Left-click the mouse. This clears the utility screen, memory, and the keyboard buffer.
- Make sure the mouse is stationary (not moving) and is still in the utility screen.
- Present a credential/employee ID badge to the reader. The reader's LED will flash green at this point since it is reading and keystroking the data, including special function keys to your computer. The reader may also omit a short beep. Do not move or click the mouse.
- When the reader LED is red, this indicates all keystroked data has been read and keystroked.
- Move the mouse just slightly and the reader's output will display on the utility screen from memory.
- A left mouse-click will clear the screen and copy the screen contents into the keyboard buffer.
- The user can paste the output into any document from the keyboard buffer.
- Middle mouse button/wheel click will close the utility (Using Alt + F4, or move the mouse to the X close window will also work)

Output Format:

In this example the user ID is 161905899483844.

	Card Output	Example
Enrollment	<F12><3><161905899483844> <ENTER>	37799
	<F4><password><ENTER>	12345\$\$
	<F5><password><ENTER>	12345\$\$
	<ENTER><ESC>	
Single Factor	<F11><F2><161905899483844><ENTER>	37799
	<F3><password><ENTER>	12345\$\$
	<ENTER>	
Dual Factor	<F10><F2><161905899483844><ENTER>	37799
	<F3>	

3. Important note about mouse cursor placement

If the utility is opened and the credential/badge is presented without first performing a left mouse-click, the following will occur:

- Credential ID is keystroked
- Credential password is keystroked two times (always in upper case)
- Miscellaneous windows search folder or a document is opened
- A quick message indicating it is not valid will briefly appear on the screen or “no items match your search”

Please follow the instructions in Step (2) to avoid this issue.

4. Rockwell Keystroke Output Protocol

The F11 key is assigned to the Login User ID for Single Factor Login in the Machine Edition application.

The F10 key is assigned to the Login User ID for Two Factor Login in the Machine Edition application.

The F12 key is assigned to the Add User button – this button performs the FactoryTalk Security enrollment function.

Single Factor Logon (F11), Two-Factor Logon (F10), and Enrollment (F12) are all possible with the same reader. The only requirement is to assign the appropriate function keys in your application – F10, F11, or F12.

If you have any questions, please call RF IDEas Technical Support at 1-866-439-4884, or email at TechSupport@RFIDEas.com.

For general Rockwell support information, go to www.RFIDEas.com/industry/rockwell.