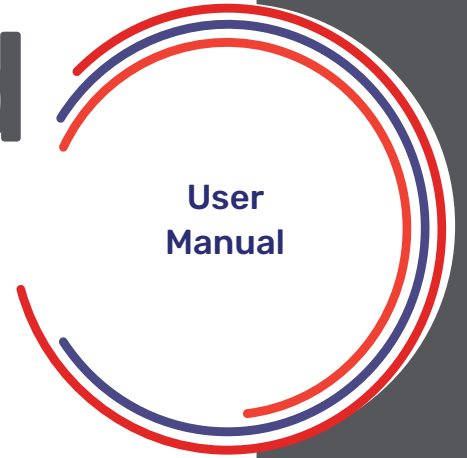




Remote Card Reader Manager for Ricoh



Version 1.0.5 | August 2023

rf IDEAS Remote Card Reader Manager for Ricoh

Contents

1. Overview	3
1.1 rf IDEAS Remote Card Reader Manager for Ricoh Overview	3
1.2 Prerequisites & Supported Platforms	3
1.2.1 Ricoh MFP Prerequisites	3
1.2.2 rf IDEAS Reader Prerequisites	3
1.2.3 Supported Operating Systems	4
1.2.4 Required Files	4
1.2.5 Readers Supported per Host	4
1.3 Summary of Features	5
2. Enabling the Ricoh MFP	6
2.1 Ricoh MFP	6
2.1.1 Determine Ricoh Card Reader Vendor ID and Product ID	6
2.1.2 Set the Ricoh Card Reader Vendor ID and Product ID on Ricoh MFP	7
2.1.3 Complete Ricoh MFP Configuration	9
3. Creating Secure .HWG+ Files and Installing rf IDEAS Remote Card Reader Manager for Ricoh ...	10
3.1 Create Secure .HWG+ file(s)	10
3.1.1 View & Modify Card Configurations	10
3.1.2 Save the Configuration as a Secure .HWG+ File	11
3.2 Compile the List of MFPs Hosting Ricoh Card Readers Requiring Configuration	12
3.3 Verify Java (JRE or Default JDK) Version	14
3.4 Install or Update Java	14
3.5 Install rf IDEAS Remote Card Reader Manager for Ricoh	15
3.5.1 Download rf IDEAS Remote Card Reader Manager for Ricoh.jar.....	15
3.5.2 Install rf IDEAS Remote Card Reader Manager for Ricoh.jar	15
3.6 Run rf IDEAS Remote Card Reader Manager for Ricoh	16
4. Configure the rf IDEAS Remote Card Reader Manager for Ricoh	17
4.1 Single Device Configuration (one rf IDEAS Card reader connected to Ricoh MFP).....	17
4.1.1 Login & Verify that CIS Plugin is Installed	17
4.1.2 If rf IDEAS Plugin is not Installed	19
4.1.3 Using Ricoh's Remote Installer Manager (RIM) to install RfIdeasReaderPlugin & RiDPConfigServletInstaller.....	20
4.1.4 Using WIM to Install RfIdeasReaderPlugin & RiDPConfigServletInstaller	21
4.1.5 Checking reader status in Single Device Configuration	23
4.1.6 Upload Secure .HWG+ file	24
4.2 Multi-Device / Fleet Configuration	26
4.2.1 Login & Verify that CIS Plugin is Installed	26
4.2.2 If rf IDEAS Plugins is not Installed	29
4.2.3 Using Ricoh's Remote Installer Manager (RIM) to install RfIdeasReaderPlugin & RiDPConfigServletInstaller	30
4.2.4 Select a Secure .HWG+ File for a "Group" of Readers	31
4.2.5 Select a Secure .HWG+ File for another "Group" of Readers	32
4.2.6 Program Readers or Groups of Readers	34
5. Have Additional Questions/Need Assistance?	36

1. Overview

1.1 rf IDEAS Remote Card Reader Manager for Ricoh Overview

The rf IDEAS Remote Card Reader Manager for Ricoh, which was jointly solutioned with RiDP Dusseldorf, allows technical service professionals to remotely manage rf IDEAS readers attached to Ricoh MFPs. Version 1.0 of the application provides the ability to remotely load Secure .HWG+ card reader configuration files to rf IDEAS readers attached to G2, G2.5, and G3 SOPs. End users can either configure readers individually, or a fleet of multiple readers simultaneously.

1.2 Prerequisites & Supported Platforms

1.2.1 Ricoh MFP Prerequisites

In order to use the rf IDEAS Remote Card Reader Manager for Ricoh, you must make sure that the MFPs you are wishing to remotely configure meet the following requirements, which have been reviewed and confirmed by RiDP Dusseldorf.

Component	Prerequisites
MFP	G2, G2.5 or G3 SOP
SmartSDK	Version 2.30 (and above) must be installed on each machine The rf IDEAS Remote Card Reader Manager application is not compatible with SmartSDK versions lower than version 2.30. If the SOP(s) you want to remotely configure do not have version 2.30 or higher, you will need to upgrade the SmartSDK to version 2.30 (and above) before you can remotely configure the SOP.
Firmware	Latest MFP firmware must be installed on each machine
HTTPS	HTTPS must be enabled on each MFP
SOP Application	Applications must use the CIS Interface of the SmartSDK Version 2.30 (and above)
rxconfServlet.zip Plugin	Version 3.8.8 must be installed on each SOP Prior versions of the rxconfServlet.zip plugin may not be compatible. To ensure compatibility, please install rxconfServlet 3.8.8 on all MFPs you wish to remotely configure. If the MFP is using a 3rd party SOP application, that application must be able to install and run operations with rxconfServlet 3.8.8. You may encounter compatibility issues if the 3rd party SOP application is using a prior version of the rxconfServlet.zip plugin.

1.2.2 rf IDEAS Reader Prerequisites

Version 1.0 of the rf IDEAS Remote Card Reader Manager for Ricoh only supports remote configuration using Secure .HWG+ files. Future versions of the rf IDEAS Remote Card Reader Manager for Ricoh will support remote reader management for using Secure .INI files as well as .HEX reader firmware files.

Supported Readers

Partially Supported Readers*

EMEA EDP Code	America EDP Code rf IDEAS Model	EMEA EDP Code	America EDP Code rf IDEAS Model
934189	RDR-805R1AKU	945548	RDR-30581BKU
942022	RDR-800R1AKU	953247	RDR-30541BKU-RSOP
953246	RDR-80541AKU-RSOP	953248	RDR-80M41AKU-RSOP
-	KT-80041AKU-RSOP	954177	RDR-80LH1BKU
959015	RDR-75R1AKU	9P02589	RDR-8XMR1AKU
971968	RDR-7L81AKU	9P25422	RDR-30531EKU
984190**	KT-80581AKU**	9P25423	RDR-30MR1CKU-MXS
9P28629	RDR-805R1AKU-G3		

*These model readers may require a Secure .INI+ file for full configuration. Support for this file type will be added in future application releases.

**984190 / KT-80581AKU readers are older units and are likely to have outdated reader firmware. If you are having issues connecting or sending new configuration files to this reader model (409 error message), [contact rf IDEAS Technical Support](#).

1. Overview

1.2 Compatibility & Supported Platforms

1.2.3 Supported Operating Systems

- **Window OS**

[Click here](#) to download Java SE Runtime Environment 8u241 (jre-8u241-windows-x64.exe) from Oracle. Be sure to scroll down the page and download the Windows version in the section titled Java SE Runtime Environment 8u241. Oracle account registration required to download.

1.2.4 Required Files

- **RfIdeasReaderPlugin.zip v1.00.10 and RiDPConfigServletInstaller.zip v2.02.28:** Ricoh Card Reader CIS Plugin included in the following download package folder: rf IDEAS Remote Card Reader Manager for Ricoh\rf IDEAS CIS plugin
- **.json file (parameters for CIS Plugin installation, removal, etc.):** Sample included in the following download package folder: rf IDEAS Remote Card Reader Manager for Ricoh\CIS deployment files
- **.csv file (list of the target MFPs and their IP address):** Sample included in the following download package folder: rf IDEAS Remote Card Reader Manager for Ricoh\sample CSV files
- **Secure .HWG+ file:** Sample included in the following download package folder: rf IDEAS Remote Card Reader Manager for Ricoh\CIS deployment files

1.2.5 Readers Supported per Host

- Number of readers supported per host: 1 connected to the SOP

1. Overview

1.3 Summary of Features

Single Device Configuration

Includes rf IDEAS CIS Plugin(s) deployment and reader configuration

rf IDEAS reader-related Task

Task or Sub-Task initialization

Task or Sub-Task logs

Host Device (i.e. MFP with rf IDEAS reader) access

Task mode

File(s) required for the chosen Task or Sub-Task

Multi-Device / Fleet Configuration

Includes rf IDEAS CIS Plugin(s) deployment and reader configuration

rf IDEAS reader-related Task

rf IDEAS reader-related Sub-Task(s)

Task or Sub-Task initialization

Task or Sub-Task logs

Host Device (i.e. MFP with rf IDEAS reader) access

File(s) required for the chosen Task

File(s) content visualization

File(s) required for the chosen Sub-Task

File(s) content visualization

Configuration results + Export to .CSV file

Sub-Task addition

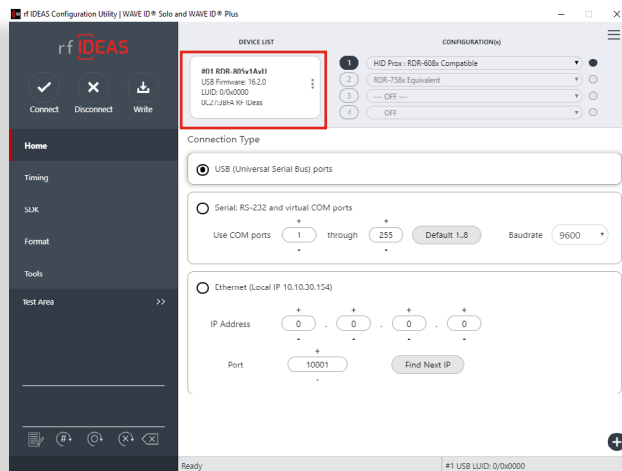
2. Enabling the Ricoh MFP

2.1 Ricoh MFP

2.1.1 Determine Ricoh Card Reader Vendor ID (VID) and Product ID (PID)

Option 1 – Using the rf IDEAS Configuration Utility

- Plug your rf IDEAS reader into the computer
- Start the rf IDEAS Configuration Utility
 - Can be downloaded here: rfideas.com/support/tools/downloads
- Click the Connect icon in the left hand nav.
- Once connected, you will see your reader appear under Device List

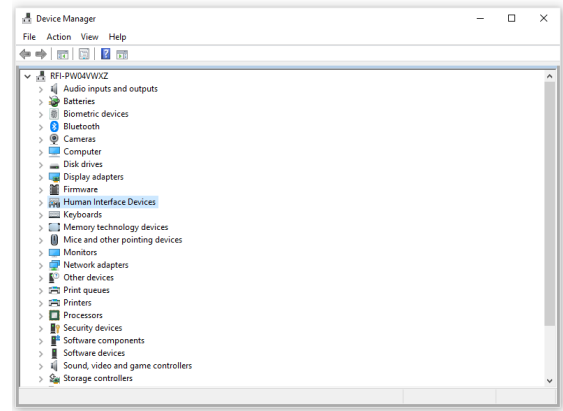


- Copy the VID and PID shown under Device List

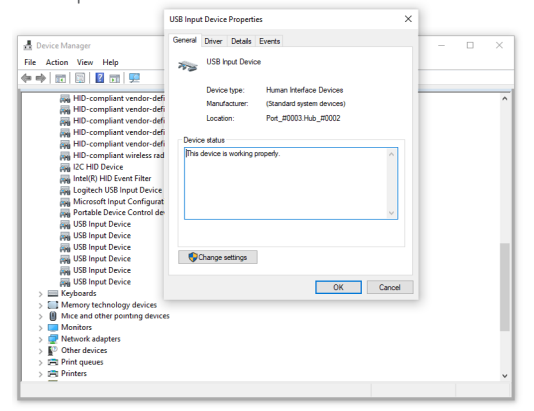


Option 2 – Using Windows Device Manager

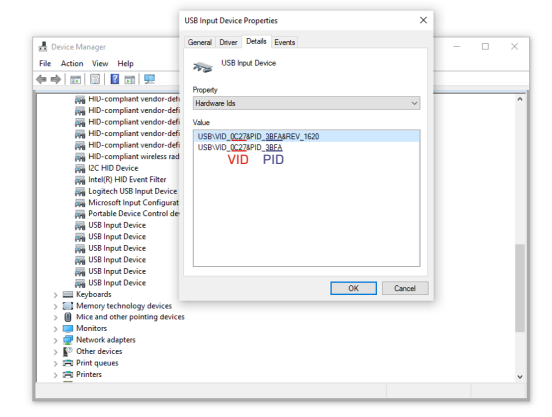
- Start Device Manager (Windows OS)
- Locate and Expand Human Interface Devices



- Right-click on the USB input device and select "Properties"



- Click the "Details" tab, then set Property to "Hardware IDs"
- Copy the VID and PID shown under Device List



2. Enabling the Ricoh MFP

2.1 Ricoh MFP

2.1.2 Set the Ricoh Card Reader Vendor ID and Product ID on Ricoh MFP

Option 1 – Using the Web Image Monitor (WIM)

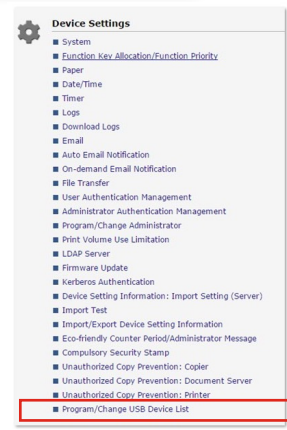
- Login into the Web Image Monitor with MFP username + password
WIM -> Device Management

- Go to Configuration
WIM -> Device Management -> Configuration



- Click on Program/Change USB Device List
WIM -> Device Management -> Configuration -> Program/Change USB Device List

- Enter the four characters collected earlier into respective Vendor ID and Product ID field
 - e.g. Vendor ID: "0C27", Product ID "3BFA"
- Enter the characters below into respective Vendor ID and Product ID field
 - e.g. Vendor ID: "0C27", Product ID "3CFA"



Program/Change USB Device List

OK Cancel

If settings are changed while the device is connected, reconnect the device or restart the machine to apply the changes.
Enter hexadecimal numbers (0 - 9, a - f, A - F) with a maximum of 4 digits for each ID.

■ Device 1
Vendor ID : 0C27
Product ID : 3BFA

■ Device 2
Vendor ID : 0C27
Product ID : 3CFA

OK Cancel

Program/Change USB Device List

OK Cancel

If settings are changed while the device is connected, reconnect the device or restart the machine to apply the setting changes.
Enter hexadecimal numbers (0 - 9, a - f, A - F) with a maximum of 4 digits for each ID.

Device No.	Vendor ID	Product ID
Device 1	0C27	3BFA
Device 2	0C27	3CFA
Device 3		
Device 4		
Device 5		
Device 6		
Device 7		
Device 8		
Device 9		
Device 10		

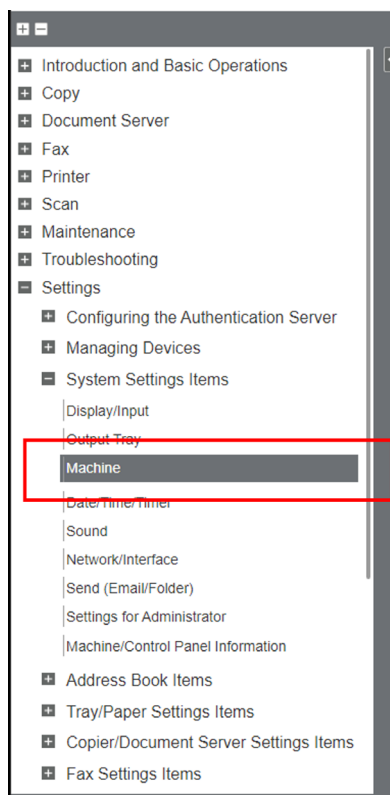
OK Cancel

2. Enabling the Ricoh MFP

2.1 Ricoh MFP

2.1.2 Set the Ricoh Card Reader Vendor ID and Product ID on Ricoh MFP

Setting Vendor ID and Product ID on G3 Machines



External Device	
Setting Items	Description
Register/Change USB Device List	Register Product ID and Vendor ID information for an IC card reader device as a set to the device list to limit the usage of USB devices. The "Product ID" and "Vendor ID" information for a USB device have been assigned by the manufacturer to identify the individual device. "Vendor ID" input settings are between 0x0001 and 0xFFFE and "Product ID" input settings are between 0 and 0xFFFF. Up to ten pairs of "Product ID" and "Vendor ID" information can be registered.

- Please reboot (switch off - then on) the device after making those changes.

2. Enabling the Ricoh MFP

2.1 Ricoh MFP

2.1.2 Set the Ricoh Card Reader Vendor ID and Product ID on Ricoh MFP

Option 2 – Using the Panel

- Login into the Panel
 - Panel -> User Tools
- Go to Machine Settings
 - Panel -> User Tools -> Machine Settings
- Click on Program/Change USB Device List
 - Panel -> User Tools -> Machine Settings -> Program/Change USB Device List
- Enter the four characters collected earlier into respective Vendor ID and Product ID field
 - e.g. Vendor ID: "0C27", Product ID "3BFA"
- Enter the characters below into respective Vendor ID and Product ID field
 - e.g. Vendor ID: "0C27", Product ID "3BFA"

2.1.3 Complete Ricoh MFP Configuration

- Set the "Screen Startup Mode" to Normal
 - The default Screen Startup Mode is "Quick". It boots the screen as fast as possible even though some background applications may not be ready yet.
 - The "Quick" startup mode may cause misunderstanding that device is ready to use.
 - To avoid those misunderstandings, it is recommended to set "Normal" Screen Startup Mode.
- Enable Human Detection Sensor
 - This sensor should be enabled by factory. The settings organization has been changed when migrating models from Classic screen type to the new Standard screen type.
 - The following subsections shows screenshots.
 - Screen type Classic
 - Press [Settings] on the Home screen. Press [Machine Features Settings].
 - Press [System Settings] [General Features] tab [Human Detection Sensor], and then press [Active].
 - Press [OK]. After completing the procedure, press [Home]
 - Screen type Standard
 - Press [Settings] on the Home screen. Press [System Settings].
 - Press [Machine][Power/Energy Saving][Human Detection Sensor].

3. Creating Secure .HWG+ Files and Installing rf IDEAS Remote Card Reader Manager for Ricoh

3.1 Create Secure HWG+ file(s)

- You will need to use the [rf IDEAS Configuration Utility](#) (Windows, Linux, and macOS) to create a Secure .HWG+ file that can be used in the rf IDEAS Remote Card Reader Manager for Ricoh application.
 - Sample Secure HWG+ files are included with the rf IDEAS Remote Card Reader Manager for Ricoh tool installer package, to help you understand the format and content within a Secure .HWG+ file.
- Please follow the steps below to create the appropriate configuration for the end-user RFID card(s) (current and future), and then create a Secure .HWG+ file that can be used in the rf IDEAS Remote Card Reader Manager for Ricoh.

3.1.1 View & Modify Card Configurations

Step 1: View Card Configurations

Click "Write" to save your choices to the reader. (5)

Click "Connect" to access the reader(s) plugged into your PC. (2)

Place your mouse cursor in the section directly below "Test Area". Present your card on the reader to see the output values. (6)

Select the Configuration that you wish to amend or add. (3)

Select the Technology / Card Type that you want to program into the reader. (4)

Select the reader connection type (1)

Step 2: Modify Card Configurations

Click "Write" to save your choices to the reader. (13)

Click "Format" to change how the card data is outputted. (7)

Place your mouse cursor in the section directly below "Test Area". Present your card on the reader to see the output values. (14)

Select the configuration for which you want to amend how the card data is "outputted". (8)

To change the bytes order. (10)

To set the number of digits that should be in the reader output. (12)

To change the reader output from decimal to hexadecimal. (11)

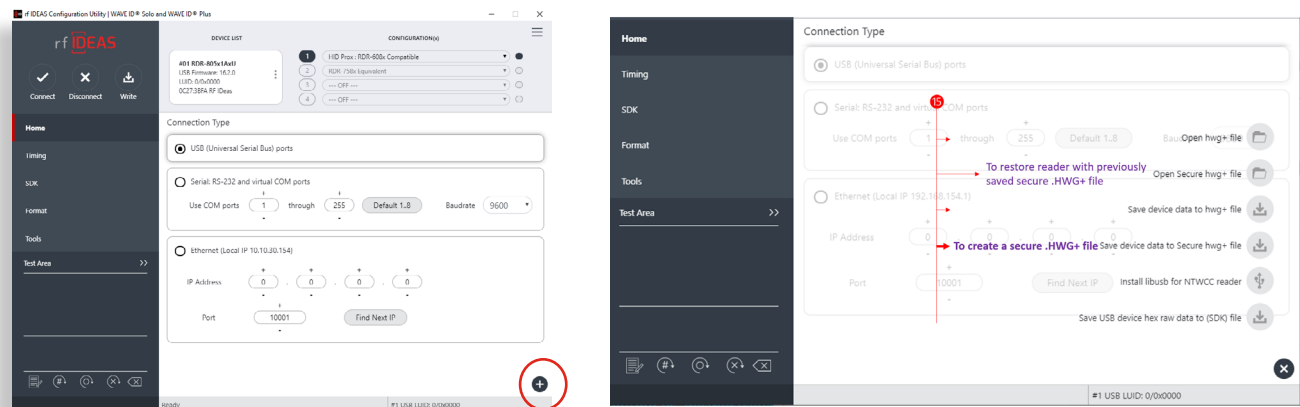
Enable ability to change reader output length. (9)

3. Creating Secure .HWG+ Files and Installing rf IDEAS Remote Card Reader Manager for Ricoh

3.1 Create Secure HWG+ file(s)

3.1.2 Save the Configuration as a .HWG+ File

1. Click the + icon at the bottom right- hand corner of the rfIdeas Configuration Utility.
2. Choose "Save" device data to Secure hwg+ file.



Further configuration guides are available at:

- <https://knowledgebase.rfideas.com/how-do-i-configure-my-plus-reader-to-read-different-card-types/>
- <https://knowledgebase.rfideas.com/how-to-configure-my-plus-reader-for-2-different-card-formats-that-use-the-same-card-type/>

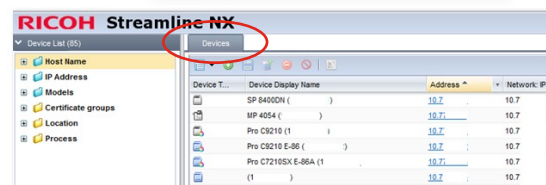
3. Creating Secure .HWG+ Files and Installing rf IDEAS Remote Card Reader Manager for Ricoh

3.2 Compile the List of MFPs Hosting Ricoh Card Readers Requiring Configuration

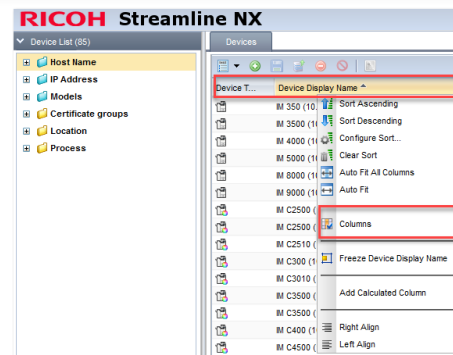
1. Log onto the SLNX admin page



2. Navigate to the Devices tab



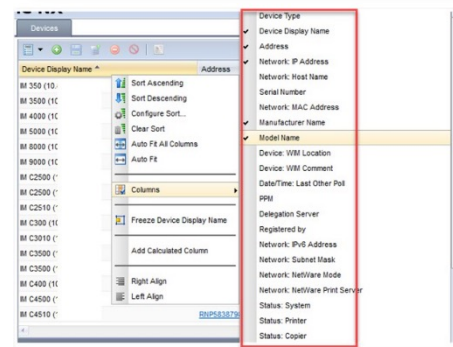
3. Right click on the name header and select "Columns".



4. Ensure the following "column" objects are selected (you can select others, the following is the minimum requirement):

- Device Display Name
- Address
- Network: IP Address
- Operational Panel
- Group

NOTE: The tool may or may not ignore unneeded columns



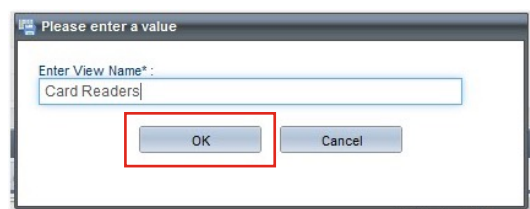
5. Click on "Views" and select "Save as"



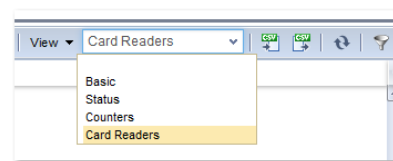
3. Creating Secure .HWG+ Files and Installing rf IDEAS Remote Card Reader Manager for Ricoh

3.2 Compile the List of MFPs Hosting Ricoh Card Readers Requiring Configuration

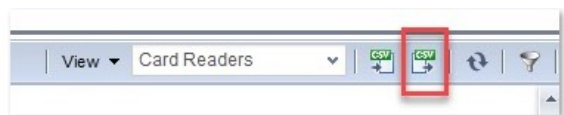
6. Enter a name for your new view and click the "OK" button



7. Now you will have the new View Name you just saved via the View dropdown for future use.



8. To Export the device, select the CSV export icon.



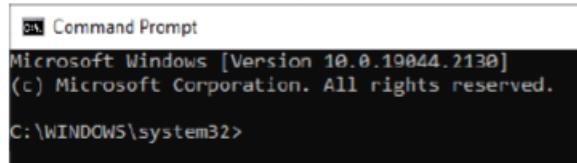
9. The exported CSV file will be downloaded to your browser's default location.
See sample .CSV file below included in
rf IDEAS Remote Card Reader Manager for Ricoh\sample CSV files

# Format Version: https://protect-us.mimecast.com/s/Cr8RCxkw1jum3VZcWAH7P?domain=5.1.1.0				
# Generated at: 09/30/2021 14:17:44				
# Function Name: Device List				
# Device Display Name	Address	Network: IP Address	Operation Panel	Group
dev_displayname	dev_address	dev_ipaddress	operation_panel	dev_real_group_name
MP C2004ex (10.10.30.130)	RNP583879294B2F.tc.ds	10.10.30.130	Smart	Group1
MP C2004ex (10.10.30.142)	RNP002673B7A55C.tc.ds	10.10.30.142	Smart	Group2

3. Creating Secure .HWG+ Files and Installing rf IDEAS Remote Card Reader Manager for Ricoh

3.3 Verify Java (JRE or Default JDK) Version

- Start Command Prompt (or Terminal)

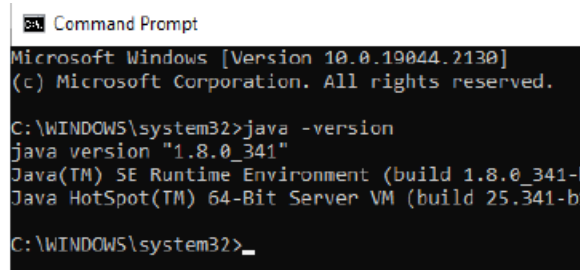


```

Command Prompt
Microsoft Windows [Version 10.0.19044.2130]
(c) Microsoft Corporation. All rights reserved.
C:\WINDOWS\system32>

```

- Type java -version, and then hit ENTER



```

Command Prompt
Microsoft Windows [Version 10.0.19044.2130]
(c) Microsoft Corporation. All rights reserved.
C:\WINDOWS\system32>java -version
java version "1.8.0_341"
Java(TM) SE Runtime Environment (build 1.8.0_341-b07)
Java HotSpot(TM) 64-Bit Server VM (build 25.341-b07)
C:\WINDOWS\system32>

```

- Type Exit, and then hit ENTER

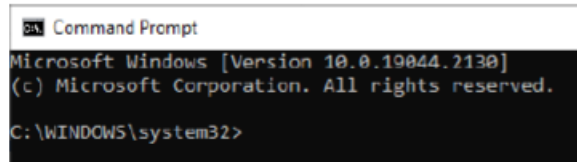
3.4 Install or Update Java

- [Click here](https://www.java.com/en/download/help/windows_manual_download.html) to download Java SE Runtime Environment 8u241 (jre-8u241-windows-x64.exe) from Oracle. Be sure to scroll down the page and download the Windows version in the section titled Java SE Runtime Environment 8u241. Oracle account registration required to download.

How to download and install Java on Windows?

https://www.java.com/en/download/help/windows_manual_download.html
https://www.java.com/en/download/help/windows_offline_download.html

- Start CMD (or Terminal)

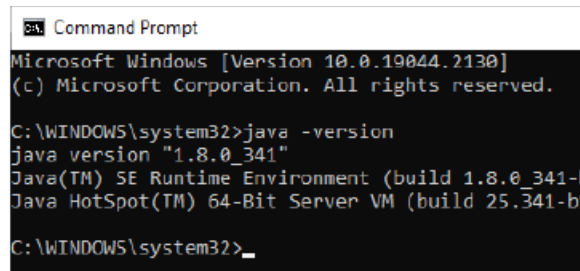


```

Command Prompt
Microsoft Windows [Version 10.0.19044.2130]
(c) Microsoft Corporation. All rights reserved.
C:\WINDOWS\system32>

```

- Type java -version, and then hit ENTER



```

Command Prompt
Microsoft Windows [Version 10.0.19044.2130]
(c) Microsoft Corporation. All rights reserved.
C:\WINDOWS\system32>java -version
java version "1.8.0_341"
Java(TM) SE Runtime Environment (build 1.8.0_341-b07)
Java HotSpot(TM) 64-Bit Server VM (build 25.341-b07)
C:\WINDOWS\system32>

```

- Type Exit, and then hit ENTER

3. Creating Secure .HWG+ Files and Installing rf IDEAS Remote Card Reader Manager for Ricoh

3.5 Install rf IDEAS Remote Card Reader Manager for Ricoh

3.5.1 Download rf IDEAS Remote Card Reader Manager for Ricoh.jar

- [Click here](#) to download the rf IDEAS Remote Card Reader Manager installation file, (.zip file), which contains the rf IDEAS Remote Card Reader Manager for Ricoh.jar

3.5.2 Install rf IDEAS Remote Card Reader Manager for Ricoh.jar

- Place the rf IDEAS Remote Card Reader Manager for Ricoh installation .zip file in **C:\Program Files**
- Unzip the rf IDEAS Remote Card Reader Manager for Ricoh installation file.










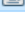
NOTE: If you choose to unzip and save the .jar file in file location other than C:\Program Files, then you must change all the file paths inside the “deploycardreader.json” file, which is located in the CIS deployment files folder.

```
*deploycardreader - Notepad
File Edit Format View Help
{
  "deploy_settings":{
    "cis_plugin":{
      "file_path": "C:/Program Files/rf IDEAS Remote Card Reader Manager for Ricoh/rf IDEAS CIS plugin/RfIdeasReaderPlugin.zip",
      "package_name": "com.ridp.usb.cis.rfideas",
      "product_id": "1667760129"
    },
    "config_servlet":{
      "file_path": "C:/Program Files/rf IDEAS Remote Card Reader Manager for Ricoh/rf IDEAS CIS plugin/RiDPConfigServletInstaller.zip",
      "package_name": "com.ridp.utils.configservlet",
      "product_id": "1667760130"
    }
  },
  "undeploy_settings":{
    "cis_plugin":{
      "product_id": "1667760129"
    },
    "config_servlet":{
      "product_id": "1667760130"
    },
    "reboot": false
  },
  "verify_settings":{
    "cis_plugin":{
      "product_id": "1667760129"
    },
    "config_servlet":{
      "product_id": "1667760130"
    }
  },
  "cis_plugin_settings":{
    "class": "KSR",
    "package_name": "com.ridp.usb.cis.rfideas",
    "name": "pcProx Card Reader",
    "vendor_id": "0C27",
    "product_id": "38FA"
  },
  "rx_configServlet_settings":{
    "file_path": "C:/Program Files/rf IDEAS Remote Card Reader Manager for Ricoh/RXOP 3.8.x release/Current/3.8.8/rxconfServlet-3.8.8.zip",
    "package_name": "n.a.",
    "product_id": "33817035"
  },
  "usb_reader_registration":[
    {
      "vendor_id": "0C27",
      "product_id": "3CFA"
    }
  ]
}
```

3. Creating Secure .HWG+ Files and Installing rf IDEAS Remote Card Reader Manager for Ricoh

3.6 Run rf IDEAS Remote Card Reader Manager for Ricoh

- Navigate to / Open the rf IDEAS Remote Card Reader Manager for Ricoh installation folder.
- To launch the rf IDEAS Remote Card Reader Manager for Ricoh application, double click the rf IDEAS Remote Card Reader Manager for Ricoh.jar

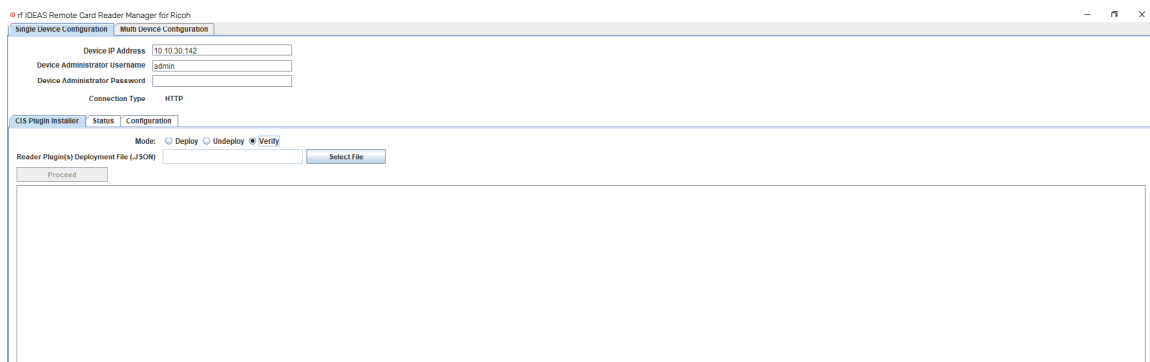
Name	Date modified	Type	Size
 CIS deployment files	7/31/2023 1:55 PM	File folder	
 Documentation	7/31/2023 1:56 PM	File folder	
 End-User License Agreement (EULA)	7/20/2023 9:52 AM	File folder	
 lib	7/31/2023 2:07 PM	File folder	
 rf IDEAS CIS plugin	7/31/2023 1:56 PM	File folder	
 RXOP 3.8.x release	7/31/2023 1:56 PM	File folder	
 sample CSV files	7/31/2023 1:56 PM	File folder	
 sample SecureHWG config files	7/31/2023 1:56 PM	File folder	
 README	7/11/2023 1:27 PM	Text Document	2 KB
 rf IDEAS Remote Card Reader Manager for Ricoh	7/11/2023 1:27 PM	Executable Jar File	345 KB

4. Configure the rf IDEAS Remote Card Reader Manager for Ricoh

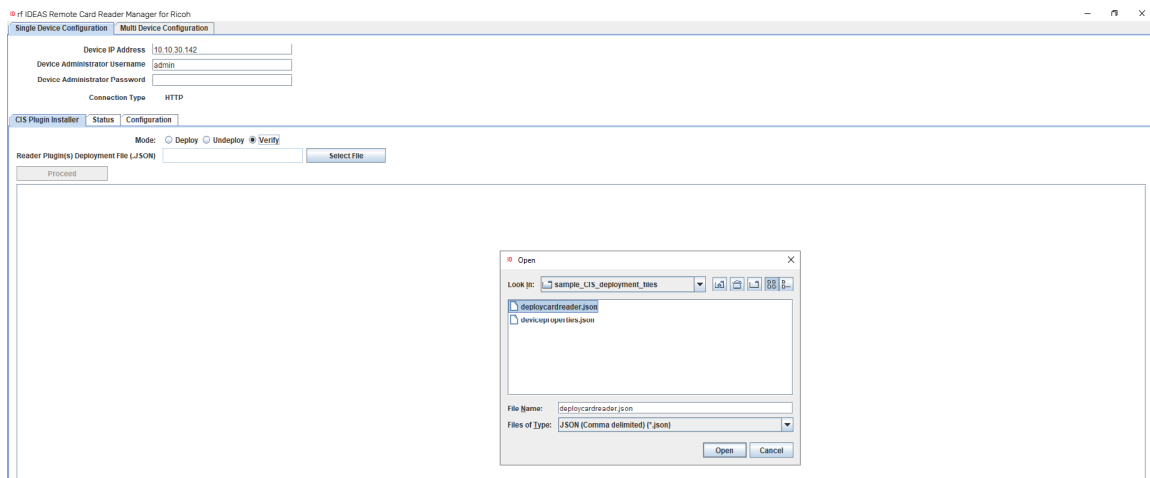
4.1 Single Device Configuration (one rf IDEAS Card reader connected to Ricoh MFP)

4.1.1 Login & Verify that CIS Plugin is Installed

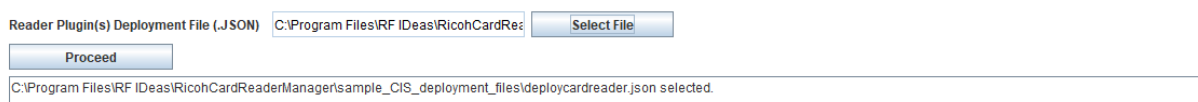
- Click on the Single Device Configuration tab
- Enter the IP address + Admin credentials (Username and/or Password) for the Host MFP (=MFP onto which the rf IDEAS reader is connected to)
- Set the connection type to HTTP
 - NOTE: HTTPS is not supported in Version 1.0 of the rf IDEAS Remote Card Reader Manager for Ricoh
- Click on the "CIS Plugin Installer" tab
- Set the CIS Plugin installer's mode to "Verify"



- Click on the Select file button to load the rf IDEAS plugin "deployment" .json file



- Select the following file:
rf IDEAS Remote Card Reader for Ricoh\CIS deployment files\deploycardreader.json, and click Open
- Click "Proceed" button

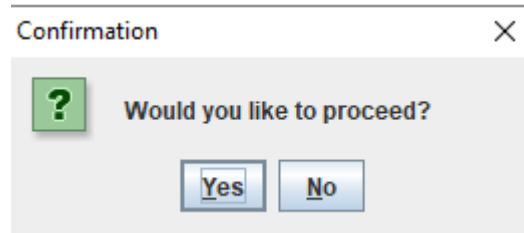


4. Configure the rf IDEAS Remote Card Reader Manager for Ricoh

4.1 Single Device Configuration (one Ricoh Card reader connected to Ricoh MFP)

4.1.1 Login & Verify that CIS Plugin is Installed

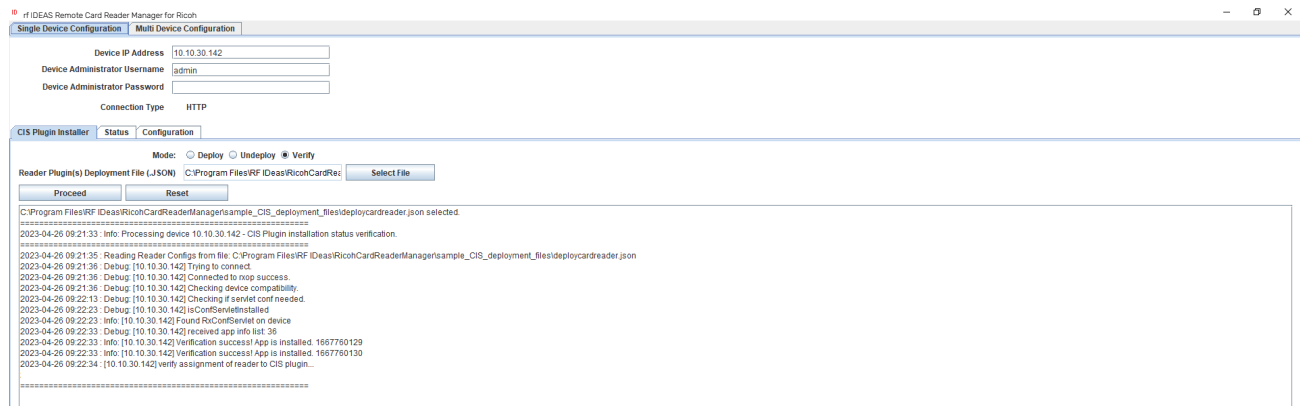
- Click "Yes" to start rf IDEAS reader CIS plugin(s) installation on the Ricoh MFP



NOTE: If you see RxConfServlet is missing on device while working with G2 SOP with SDK/j, please first install it on the machine. You can do this via the Web Interface\Configuration (Admin mode)\Install.

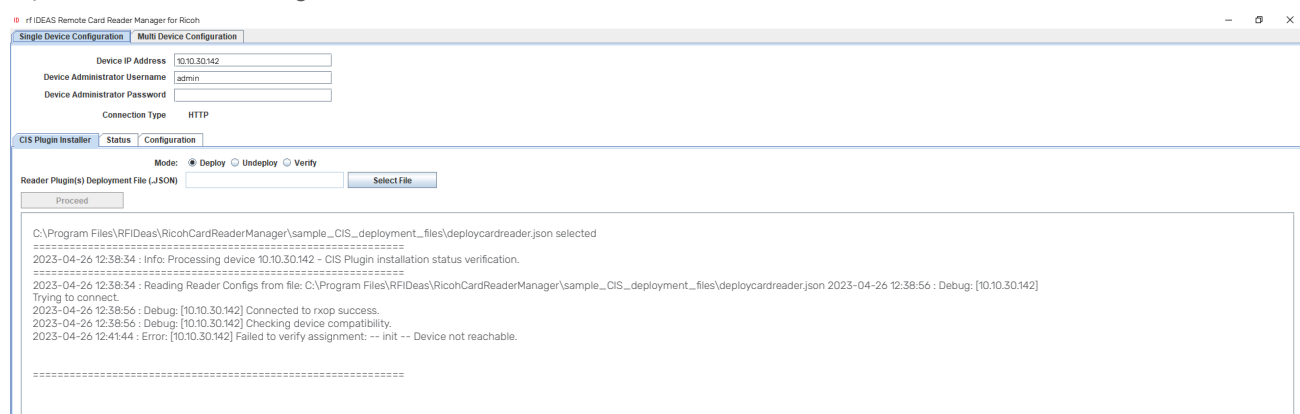
Sample Responses

Successful Results



Unsuccessful Results

If you receive the following results.....



Ensure that Machine is accessible/connected to the network, and then try again.

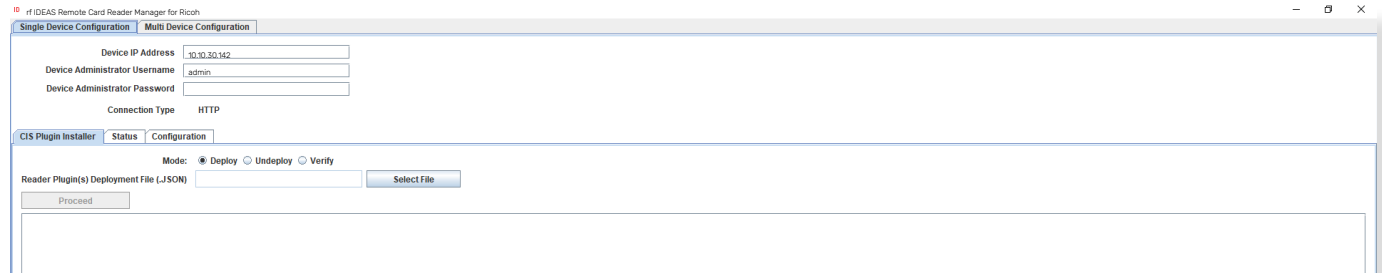
- Wait for Proceed and/or Reset to be available once more (i.e. not greyed out)

4. Configure the rf IDEAS Remote Card Reader Manager for Ricoh

4.1 Single Device Configuration (one rf IDEAS reader connected to Ricoh MFP)

4.1.2 If rf IDEAS Plugin is not Installed

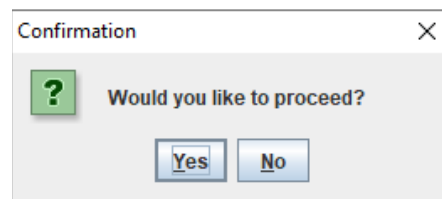
- If the rf IDEAS plugins are not installed, please set the CIS Plugin Installer's mode to "Deploy"



- Click on the Select file button to load the rf IDEAS plugin "deployment" .json file
- Select rf IDEAS Remote Card Reader for Ricoh\CIS deployment files\deploycardreader.json
- Click the "Proceed" button



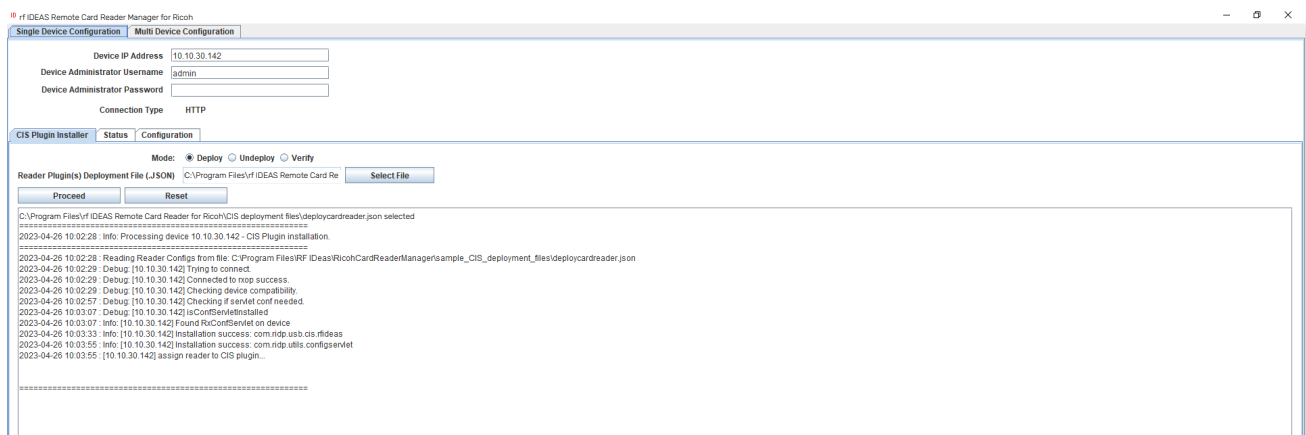
- Click "Yes" for the rf IDEAS CIS Plugin(s) to be installed on the target Ricoh MFP



NOTE: If you see RxConfServlet is missing on device while working with G2 SOP with SDK/j, please first install it on the machine. You can do this via the Web Interface\Configuration (Admin mode)\Install.

Log File Responses

Successful Results



NOTE: Some G2 panels may require a manual reboot after successful plugin installation.

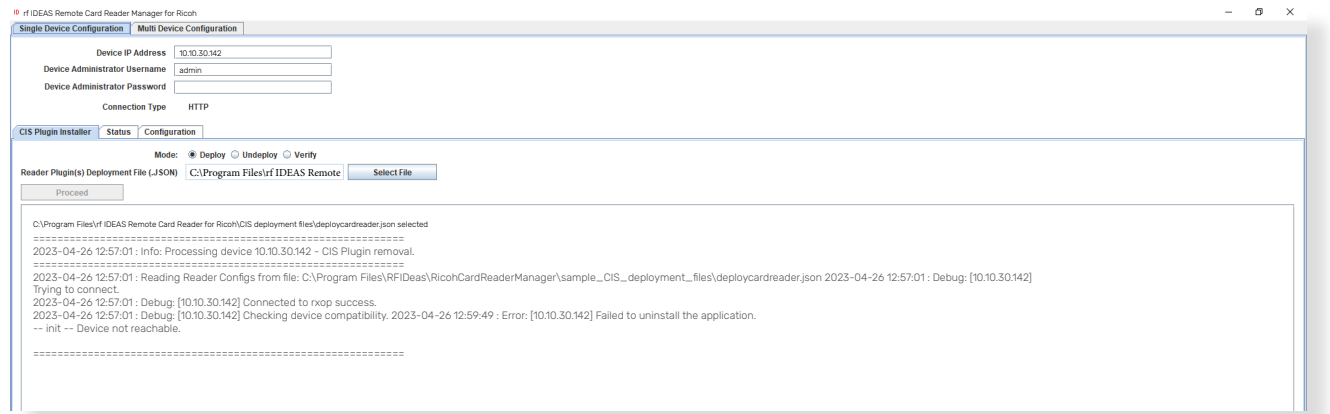
4. Configure the rf IDEAS Remote Card Reader Manager for Ricoh

4.1 Single Device Configuration (one rf IDEAS reader connected to Ricoh MFP)

4.1.2 If rf IDEAS Plugin is not Installed

Unsuccessful Results

If you receive the following results.....



Ensure that Machine is accessible/connected to the network, and then try again.

- Wait for Proceed and/or Reset to be available once more (i.e. not greyed out)

Undeploy Function:

- You can Undeploy any plugin file uploaded to the MFP via the rf IDEAS Remote Card Reader Manager for Ricoh application by selecting the "Undeploy" radio button, then clicking the "Select File" button.
- It is not able to Undeploy plugin files installed via WIM or RIM.

4.1.3 Using Ricoh's Remote Installer Manager (RIM) to install RfIdeasReaderPlugin & RiDPConfigServletInstaller

1. Install RIM
2. Start RIM *NOTE: Don't forget to set the Ricoh MFP admin credentials under File\Environment Setting\Device Communication Settings\Authentication Settings!*
3. Right-click on Device List
4. Click on Add, and Select > Manual Entry to input the IP address of one Ricoh MFP with a Ricoh Card Reader (Manufactured by rf IDEAS)
5. Right click on the Ricoh MFP, Select Offline Operations > Install [2visit course]...> 1. Install [Device]
6. Select RfIdeasReaderPlugin.zip, and click Open
7. Click Yes in the Remote installer Manager Popup window *NOTE: Do not turn the device's power off while the process is being performed*
8. Wait for the process to be completed. *NOTE: you can also access the Ricoh MFP locally (Panel) or via WIM to confirm that the plugin was installed*
9. Repeat steps 5 thru to 8 for RiDPConfigServletInstaller.zip
10. Close RIM

4. Configure the rf IDEAS Remote Card Reader Manager for Ricoh

4.1 Single Device Configuration (one rf IDEAS reader connected to Ricoh MFP)

4.1.4 Using WIM to Install RfIdeasReaderPlugin & RiDPConfigServletInstaller

- RfIdeasReaderPlugin.zip v1.00.10 and RiDPConfigServletInstaller.zip v2.02.28 can be installed/removed via WIM using below
1. WIM --> Device Management --> Configuration --> Install.



2. Browse to the RfIdeasReaderPlug-in.zip on your local PC.
3. Click "Display Extended Feature List".
4. Select the Radio button in the Total Applications list.
5. Click "Install" button.
6. Verify that **RfIdeasReaderPlugin.zip v1.00.10** is installed successfully. Information regarding the installed applications can be confirmed from the Extended Feature Setting's Extended Feature Info screen and the Startup Setting screen.
 - 6.1 Click on Extended Feature Info (Startup Setting) from the Extended Feature Settings menu. Up to 4 applications can be displayed at once. Changes are not possible. Changing pages is done by clicking on the index button.
 - 6.2 Click on the properties button of the application that you wish to display information for. Return to the "Extended feature Info" page with the "Back" button.
7. Repeat steps 2-6 above for **RiDPConfigServletInstaller.zip**

4. Configure the rf IDEAS Remote Card Reader Manager for Ricoh

4.1 Single Device Configuration (one rf IDEAS reader connected to Ricoh MFP)

4.1.4 Using WIM to Install RfIdeasReaderPlugin & RiDPConfigServletInstaller

8. Register the CIS plugin. The CIS plugin needs to be registered to the MFP. In January 2019, Ricoh released a new model generation with G2.5 panels. Therefore, different arrangements of the MFP configuration for CIS plugin registration are described in the following subsections.

8.1 On G3 Panels

- Press "Settings".
- Press "System Settings".
- Press "Network/Interface".
- Press "Control Panel: External Interface Software Settings".
- Select "IC Card Software Settings" and ensure that "Proximity Card Reader" is enabled.
- Select "Proximity Card Reader". This window will ask you to connect your card reader.
- Plug your rf IDEAS Card Reader to the left or back of the SOP panel.
- A dialog will be shown that your card reader was registered.
- Click "OK".
- The "Proximity Card Reader Settings" page will display as follows: Please verify that Vendor ID: "0c27" and Product ID "ToDo" are set. In addition, the "Auth." checkbox must be enabled.

8.2 On G2.5 Panels

- On the Home Screen of the SOP click "User Tools".
- Select "Screen Features".
- Scroll to the bottom of the list and select "Screen device settings".
- External Interface Software Settings.
- Select "IC Card Reader" and ensure that "Proximity Card Reader" is enabled.
- Select "Proximity Card Reader Settings". This window will ask you to connect your card reader.
- Plug your RF ideas Card Reader to the right side of the SOP panel. (You may need to remove the bracket first).
- If the cabling is unclear, please refer to the "Service Manual" of the specific Ricoh MFP for more detailed instructions.
- The "Proximity Card Reader Settings" page will display as follows: Please verify that Vendor ID: "0c27" and Product ID "3BFA" (alternatively 3CFA) are set.
- In addition, the "Auth." checkbox must be enabled. Click "Ok".
- Use the "OK" and "back" button to return to home screen.
- Reboot the device.

8.3 On G2.5 Panels with ACT 1.2s

- Press "System Settings".
- Press "Network/Interface".
- Press "External Interface Software Settings".
- Select "Proximity Card Reader".
- Press "Proximity Card Reader Software Settings".
- Plug the card reader into the tablet.
- A "Toast" message pops up "The card reader has been registered". This message will disappear after a few seconds.
- Enable checkbox Authentication to "Active".
- Select as Software to use "RfIdeasReaderPlug-in".
- Press "OK".
- Go back to home screen.
- Reboot the MFD.

8.4 On G2 Panels

- On the Home Screen of the SOP click "User Tools".
- Select "Screen Features".
- Scroll to the bottom of the list and select "Screen device settings".
- ICCard/Bluetooth Software Settings.
- Select "IC Card Software Settings" and ensure that "Proximity Card Reader" is enabled.
- Select "Proximity Card Reader Settings". This window will ask you to connect your card reader.
- Plug your rf IDEAS Card Reader to the right side of the SOP panel.
- A dialog will be shown that your card reader was registered.
- Click "OK".
- The "Proximity Card Reader Settings" page will display as follows: Please verify that Vendor ID: "0c27" and Product ID "ToDo" are set. In addition, the "Auth." checkbox must be enabled.

4. Configure the rf IDEAS Remote Card Reader Manager for Ricoh

4.1 Single Device Configuration (one rf IDEAS reader connected to Ricoh MFP)

4.1.5 Checking reader status in Single Device Configuration

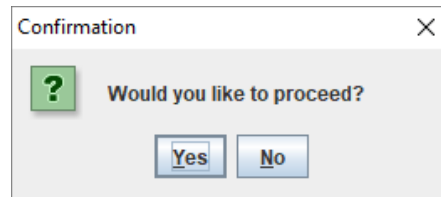
- Click on the Status tab
- Click on the “Get Status” button

The screenshot shows the 'Single Device Configuration' window. It has two tabs: 'Single Device Configuration' (active) and 'Multi Device Configuration'. The configuration fields are as follows:

Field	Value
Device IP Address	10.10.30.142
Device Administrator Username	admin
Device Administrator Password	
Connection Type	HTTP

At the bottom, there are three tabs: 'CIS Plugin Installer', 'Status', and 'Configuration'. The 'Status' tab is currently selected.

- Choose “Yes” when ready to proceed to rf IDEAS reader status verification



Log File Responses

Successful Results

The screenshot shows the 'Status' tab of the 'Single Device Configuration' window. It displays the 'Get Status' button and a log window with the following text:

```

2023-04-25 19:07:59
Waiting for user's input...

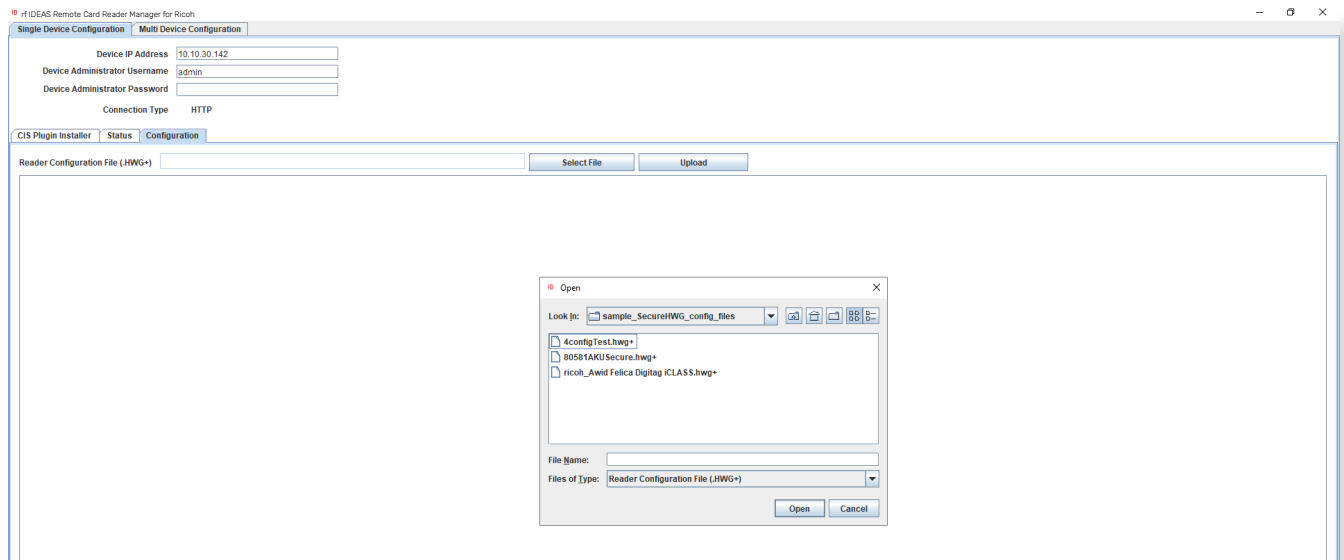
=====
2023-04-25 19:08:57
The user selected Yes
Connecting to & Checking status of rf IDEAS reader@Ricoh MFP with IP Address=10.10.30.142
Reader status = RemoteCardReaderStatus [className=com.ndp.usb.cis.rfideas, pluginId=1667760129, stateCode=ATTACHED, manufacturer=RfIdeas, model=PcPox, firmware=, lastFwChange=, configuration=ricoh_Awid Felica Digitag iCLASS hwg-, lastCfgChange=2023-04-14 08:10, manufacturerSpec=No special data by RfIdeas, errorLevel=
Request sent to rf IDEAS reader@Ricoh MFP with IP Address= 10.10.30.142 processed successfully.
Reader=(RfIdeas, PcPox, ..., ricoh_Awid Felica Digitag iCLASS hwg-, 2023-04-14 08:10)@Ricoh MFP with IP Address= 10.10.30.142
  
```

4. Configure the rf IDEAS Remote Card Reader Manager for Ricoh

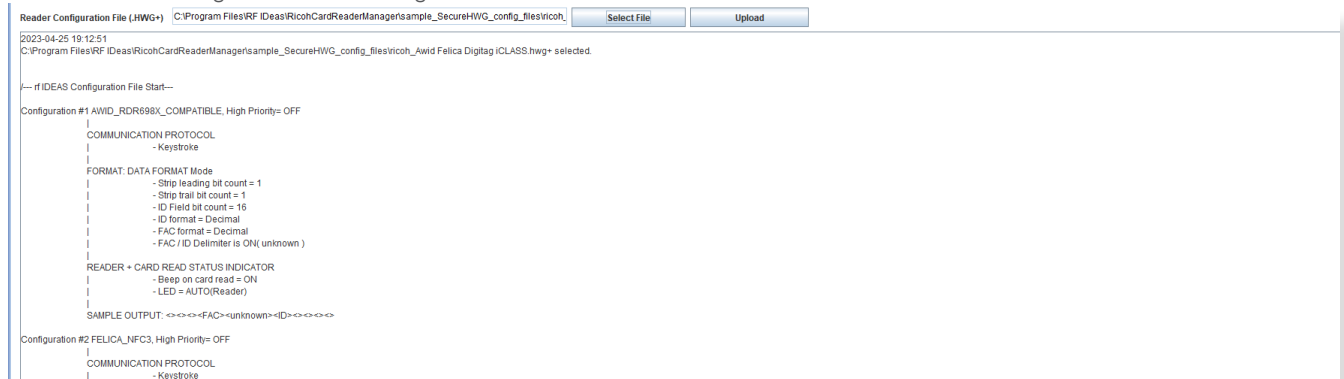
4.1 Single Device Configuration (one rf IDEAS reader connected to Ricoh MFP)

4.1.6 Upload Secure .HWG+ file

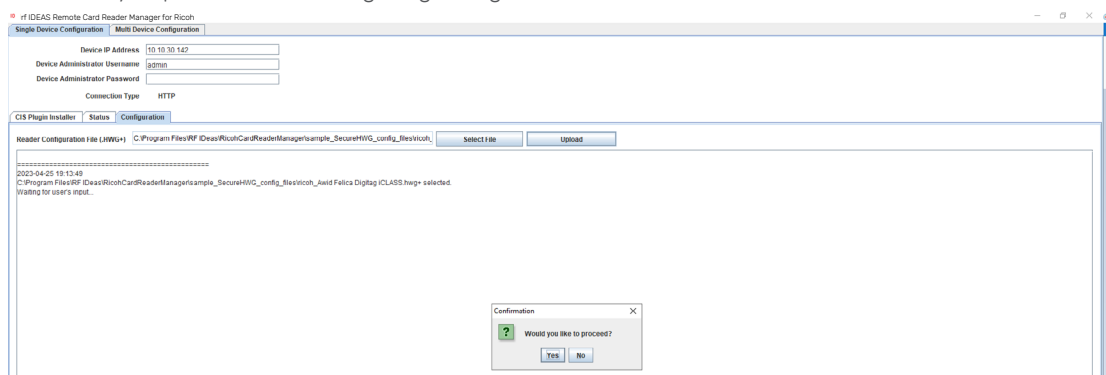
- Click on the “Configuration” tab
- Click on the “Select File” button
- Navigate to the appropriate Secure .HWG+ file for the customer, and then click “Open”



- You will see the Configuration File settings below



- Click the “Upload” button
- Choose “Yes” when ready to proceed with configuring a single rf IDEAS reader.



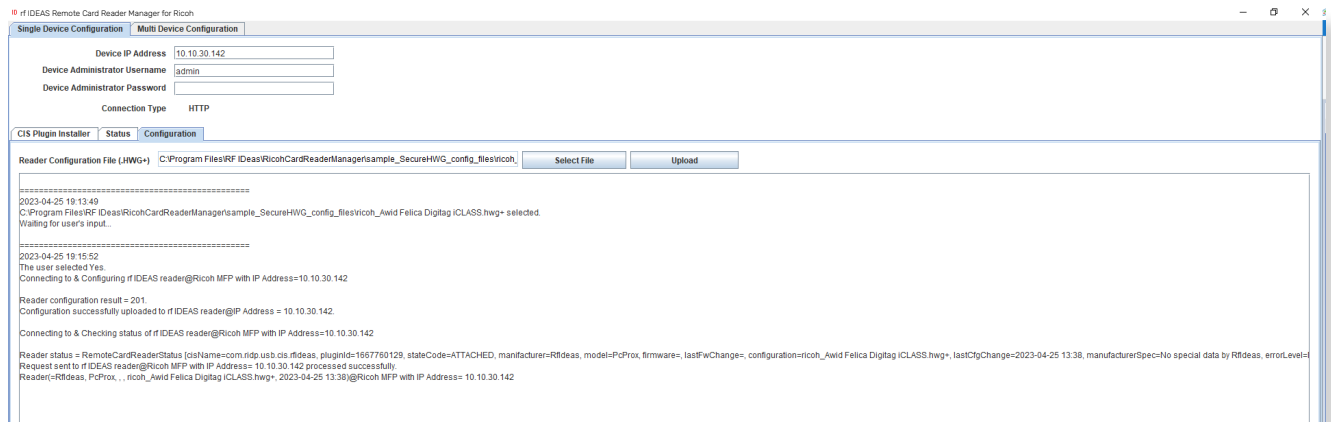
4. Configure the rf IDEAS Remote Card Reader Manager for Ricoh

4.1 Single Device Configuration (one rf IDEAS reader connected to Ricoh MFP)

4.1.6 Upload Secure .HWG+ file

Log File Responses

Successful Results

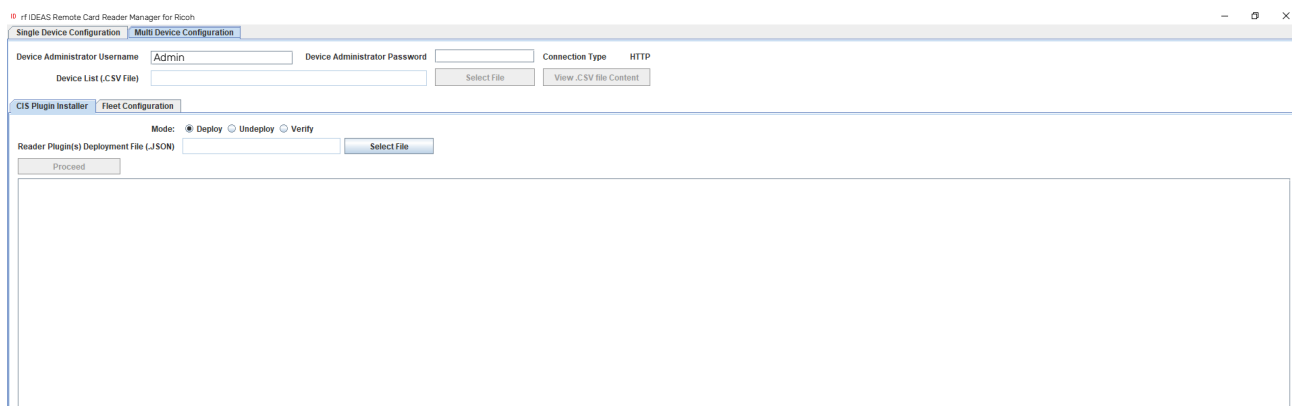


4. Configure the rf IDEAS Remote Card Reader Manager for Ricoh

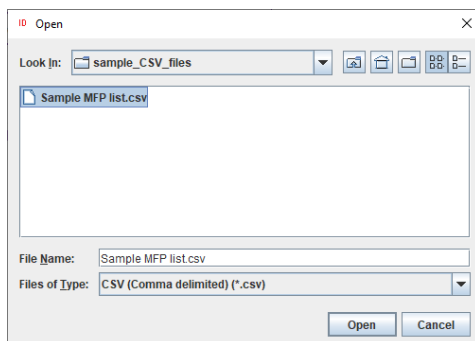
4.2 Multi-Device / Fleet Configuration

4.2.1 Login & Verify that CIS Plugin is Installed

- Click on the “Multi Device Configuration” tab
- Enter the Admin credentials (Username and/or Password) for the target MFPs (= MFPs onto which the rf IDEAS reader is connected to)
- Set the connection type to “HTTP”
 - NOTE: HTTPS is not supported in Version 1.0 of the rf IDEAS Remote Card Reader Manager for Ricoh
- Click on “Select File” to load the .CSV containing all the target MFPs



- Select: rf IDEAS Remote Card Reader Manager for Ricoh\sample CSV files\for rf IDEAS RCRM\RCRM_Sample MFP list.csv, and click “Open”



- Click on View .CSV file content to review the list of target MFPs

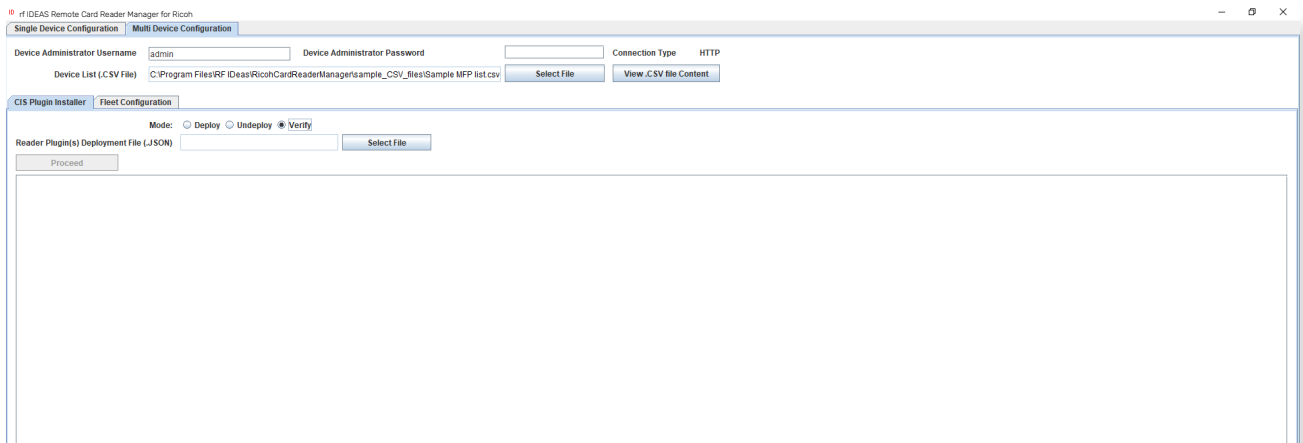
Device Display Name	Address	IP Address	Operation Panel	Group	Comment
MP C2004ex (10.10.30.130)	RNP583879294B2F.tc.ds	10.10.30.130	Smart	Group1	Supported device
MP C2004ex (10.10.30.142)	RNP002673B7A55C.tc.ds	10.10.30.142	Smart	Group2	Supported device

4. Configure the rf IDEAS Remote Card Reader Manager for Ricoh

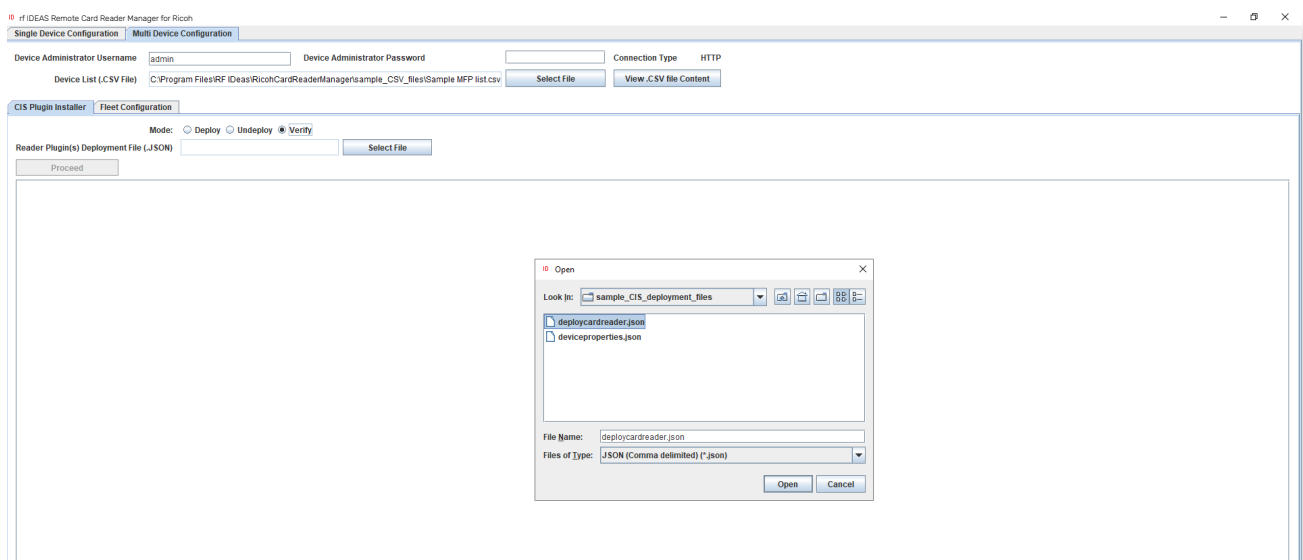
4.2 Multi-Device / Fleet Configuration

4.2.1 Login & Verify that CIS Plugin is Installed

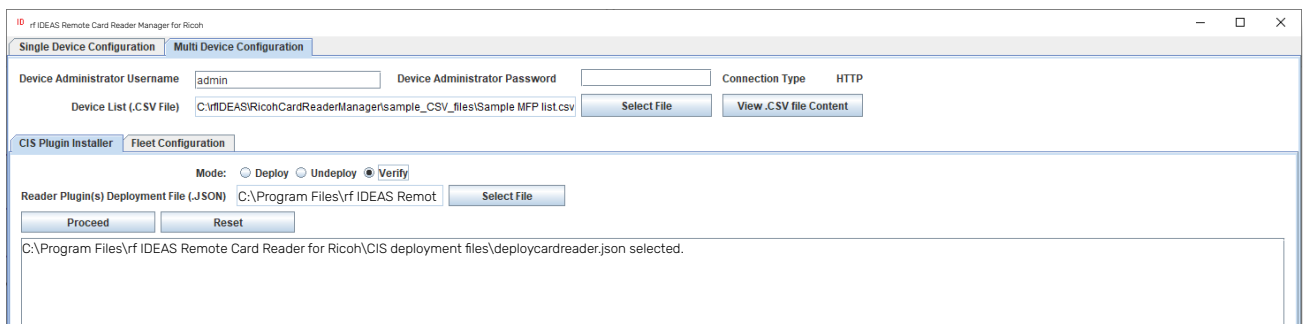
- Click on the “CIS Plugin Installer” tab
- Set the CIS Plugin Installer mode to “Verify”
- Click on the “Select” file button to load the rf IDEAS plugin deployment .json file



- Select rf IDEAS Remote Card Reader Manager for Ricoh\CIS deployment files\deploycardreader.json, and click Open



- Click “Proceed”

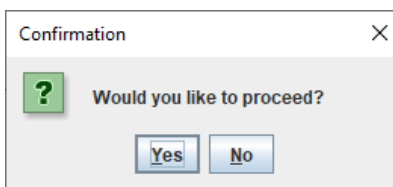


4. Configure the rf IDEAS Remote Card Reader Manager for Ricoh

4.2 Multi-Device / Fleet Configuration

4.2.1 Login & Verify that CIS Plugin is Installed

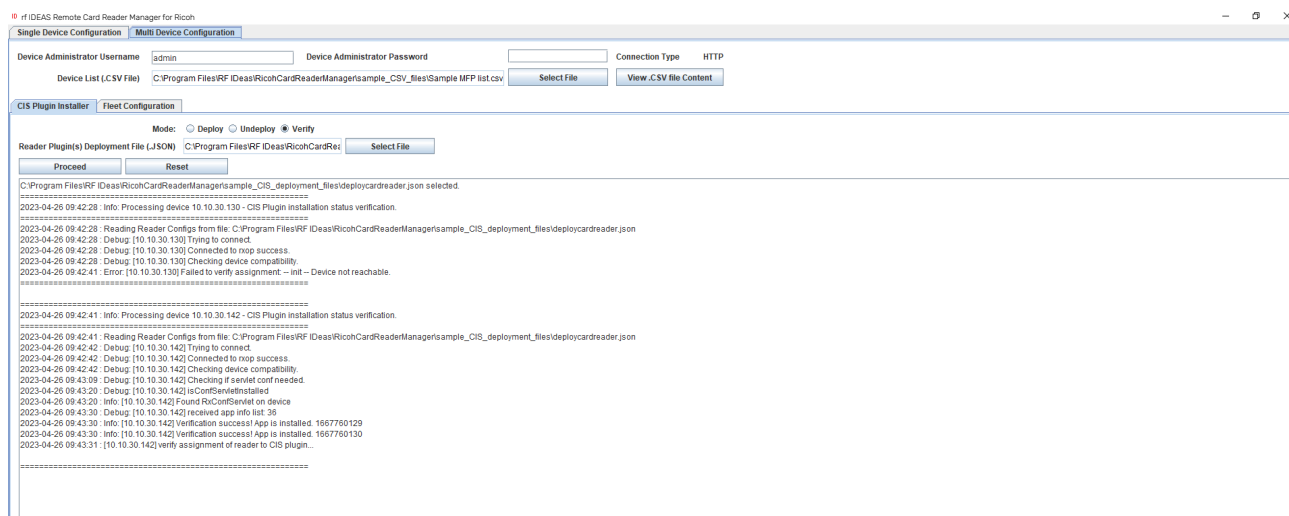
- Click “Yes” to start rf IDEAS reader CIS plugin(s) installation on the Ricoh MFP



NOTE: If you see RxConfServlet is missing on device while working with G2 SOP with SDK/j, please first install it on the machine. You can do this via the Web Interface\Configuration (Admin mode)\Install.

Log File Responses

Successful Results

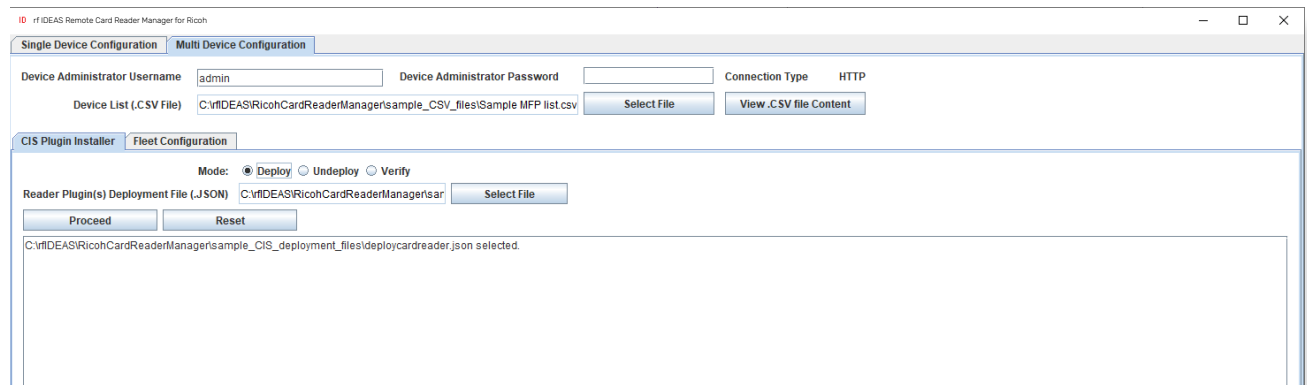


4. Configure the rf IDEAS Remote Card Reader Manager for Ricoh

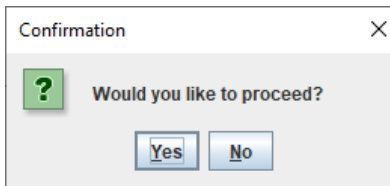
4.2 Multi-Device / Fleet Configuration

4.2.2 If rf IDEAS Plugin is not Installed

- If the rf IDEAS plugins are not installed, please Set the CIS Plugin Installer 's mode to "Deploy"
- Click on the "Select File" button to load the rf IDEAS plugin deployment .json file
- Select rf IDEAS Remote Card Reader for Ricoh\CIS deployment files\deploycardreader.json, and click Open
- After loading the .json file click the "Proceed" button



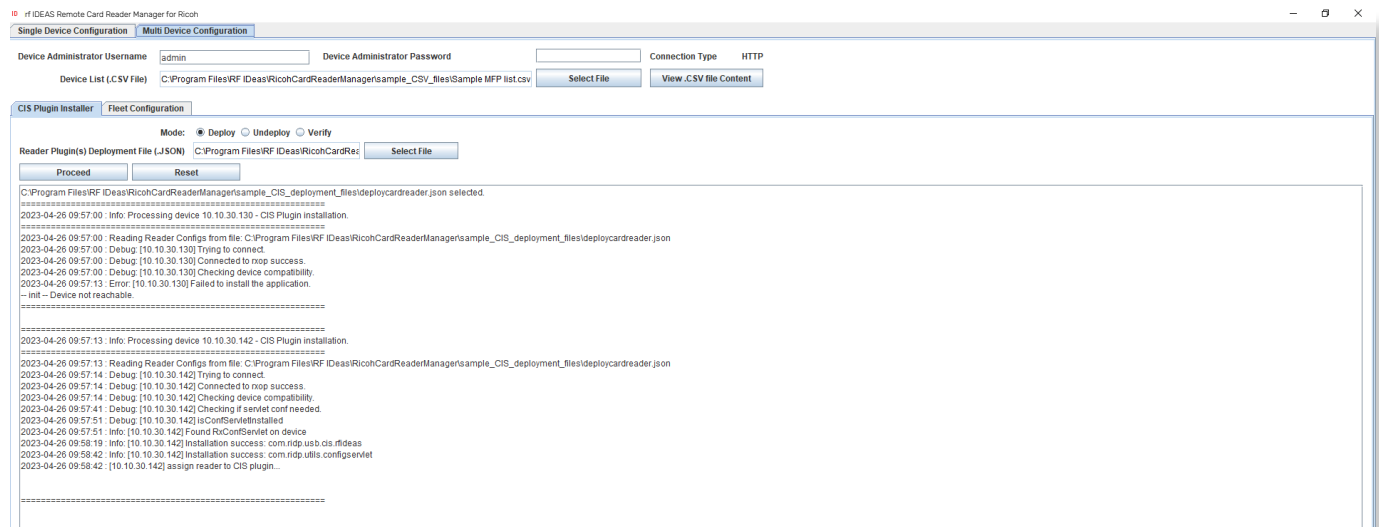
- Click on "Yes" for the rf IDEAS CIS Plugin(s) to be installed on the target Ricoh MFPs



NOTE: If you see RxConfServlet is missing on device while working with G2 SOP with SDK/j, please first install it on the machine. You can do this via the Web Interface\Configuration (Admin mode)\Install.

Log File Responses

Successful Results



NOTE: Some G2 panels may require a manual reboot after successful plugin installation.

4. Configure the rf IDEAS Remote Card Reader Manager for Ricoh

4.2 Multi-Device / Fleet Configuration

4.2.2 If rf IDEAS Plugin is not Installed

Undeploy Function:

- You can Undeploy any plugin file uploaded to the MFP via the rf IDEAS Remote Card Reader Manager for Ricoh application by selecting the "Undeploy" radio button, then clicking the "Select File" button.
- It is not able to Undeploy plugin files installed via WIM or RIM.

4.2.3 Using Ricoh's Remote Installer Manager (RIM) Installer Manager to install RfIdeasReaderPlugin & RiDPConfigServletInstaller

1. Install RIM
2. Start RIM *NOTE: Don't forget to set the Ricoh G2.5 SOP MFP admin credentials under File\Environment Setting\Device Communication Settings\Authentication Settings!*
3. Right-click on Device List
4. Click on Add, and Select > Specify File to load .CSV containing multiple Ricoh G2.5 SOP MFP(s)
5. Right - click on Ricoh G2.5 SOP MFP(s), Select Offline Operations > Install [2visit course]...> 1. Install [Device]
6. Select RfIdeasReaderPlugin.zip, and click Open
7. Click yes in the Remote installer Manager Popup window *NOTE: Do not turn the device's power off while the process is being performed.*
8. Wait for the process to be completed. *NOTE: you can also access the Ricoh G2.5 SOP MFP locally (Panel) or via WIM to confirm that the plugin was installed*
9. Repeat steps 5 thru to 8 for RiDPConfigServletInstaller.zip
10. Close RIM

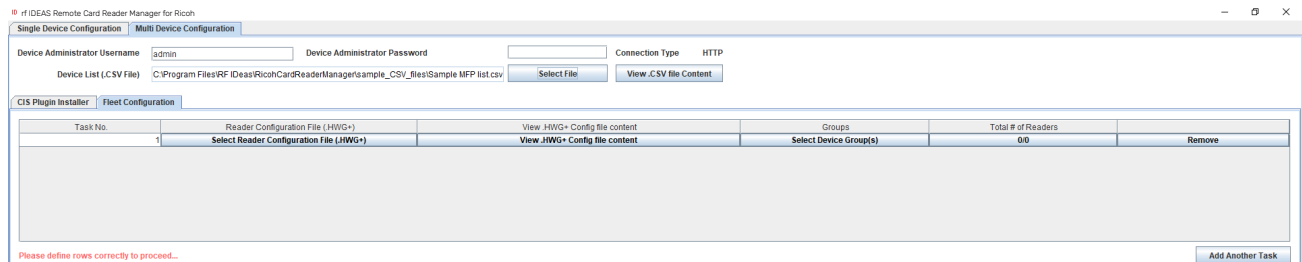
4. Configure the rf IDEAS Remote Card Reader Manager for Ricoh

4.2 Multi-Device / Fleet Configuration

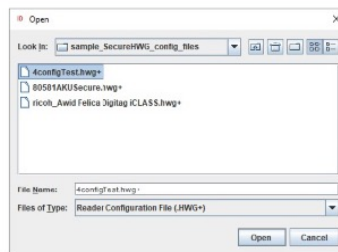
4.2.4 Select a Secure .HWG+ File for a “Group” of Readers

The Fleet Configuration function allows you to configure multiple readers, with the same Secure .HWG+ files, simultaneously.

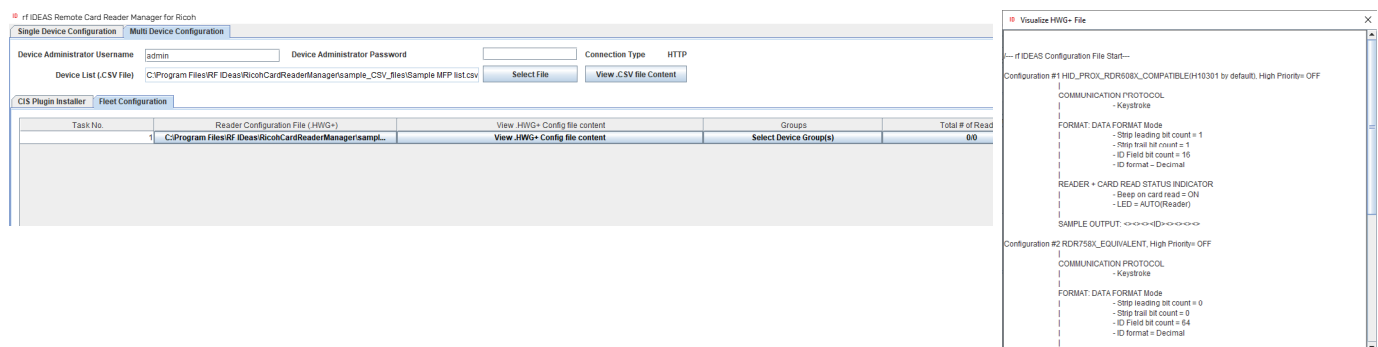
- Click on the Fleet Configuration tab
- Click on the “Select Reader Configuration File (.HWG+)” button



- Select rf IDEAS Remote Card Reader for Ricoh\sample SecureHWG config files\80581AKUSecure.hwg+
- Click “Open”



- Your selected Secure .HWG+ file appears in the task bar
- Click on the “View .HWG+ Config file content” button to view configuration settings

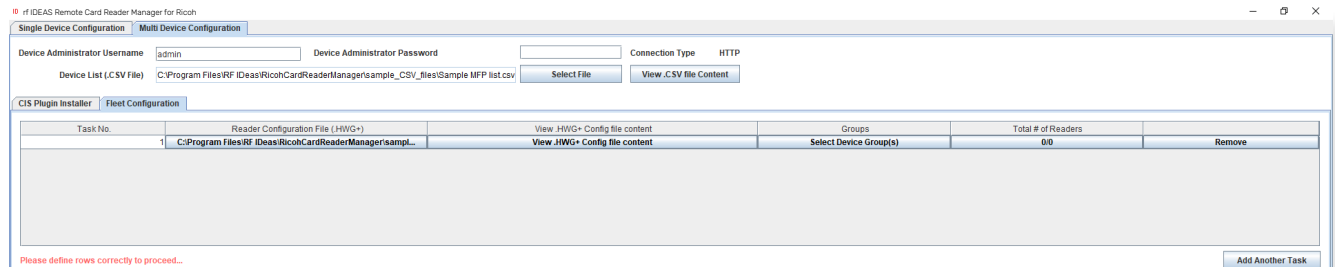


4. Configure the rf IDEAS Remote Card Reader Manager for Ricoh

4.2 Multi-Device / Fleet Configuration

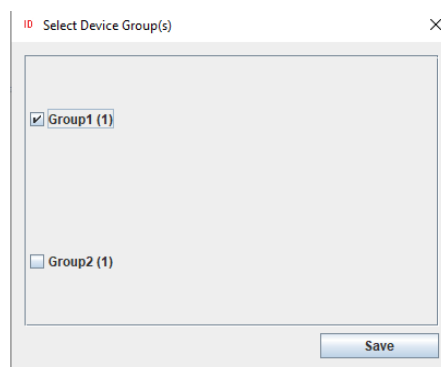
4.2.4 Select a Secure .HWG+ File for a “Group” of Readers

- Click on the “Select Device Group(s)” button to choose the MFP that the above chosen Secure .HWG+ file should be applied to.



To Configure 1 Group of Readers

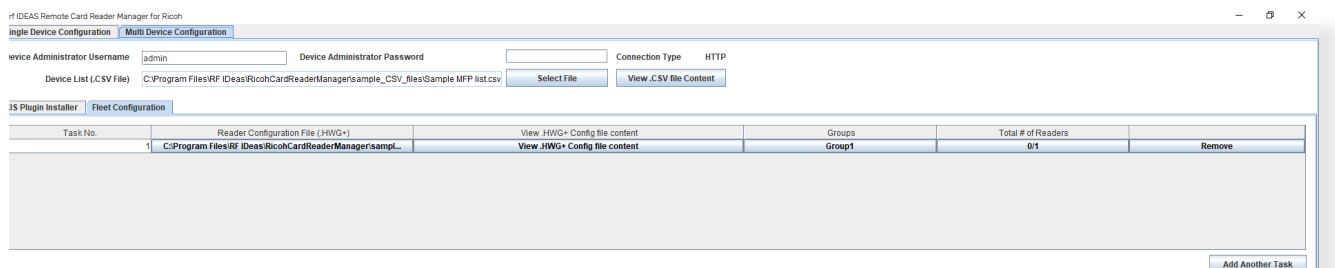
- Let's select “Group 1” which contains MP C2004ex with IP address = 10.10.30.130, and then click “Save”



4.2.5 Select a Secure .HWG+ File for Another “Group” of Readers

The Fleet Configuration function allows you to configure groups of readers, with different Secure .HWG+ files, simultaneously.

- To apply a different configuration to Group 2 which contains MP C2004ex with IP address = 10.10.30.142
- Click on “Add Another Task”



- Click on the “Select Reader Configuration File(.HWG+)” button

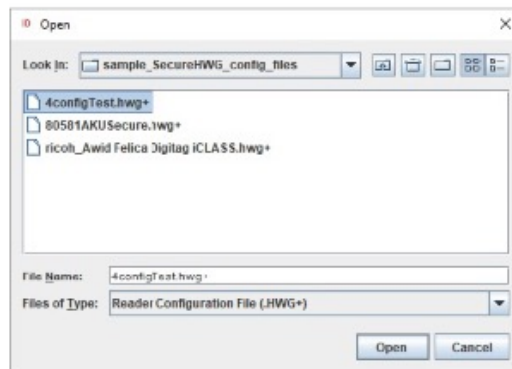
Task No.	Reader Configuration File (.HWG+)	View .HWG+ Config file content	Groups	Total # of Readers	
1	C:\rfIDEAS\RichCardReaderManager\sample...	View .HWG+ Config file content	Group1	0/1	Remove
2	Select Reader Configuration File (.HWG+)	View .HWG+ Config file content	Select Device Group(s)	0/0	Remove

4. Configure the rf IDEAS Remote Card Reader Manager for Ricoh

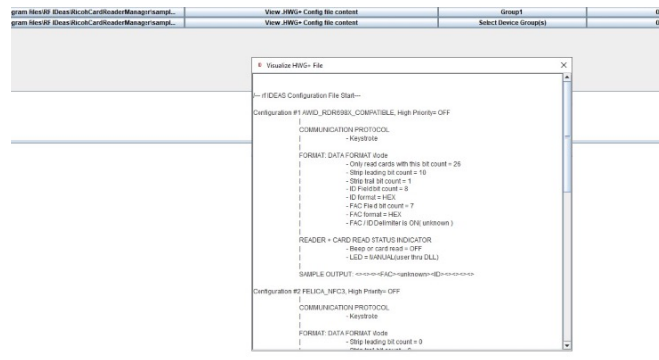
4.2 Multi-Device / Fleet Configuration

4.2.5 Select a Secure .HWG+ File for Another “Group” of Readers

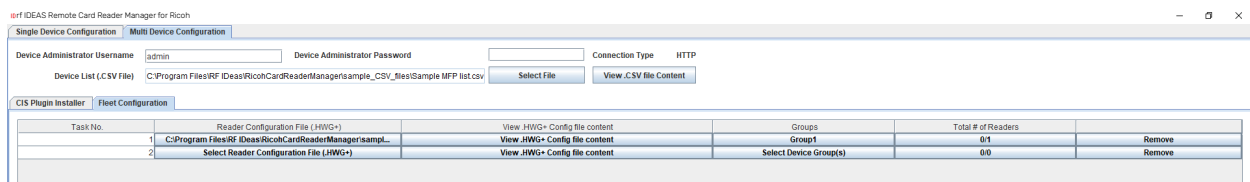
- Select rf IDEAS Remote Card Reader Manager for Ricoh\sample SecureHWG config files\ricoh_Awid Felica Digitag iCLASS.hwg+
- Click “Open”



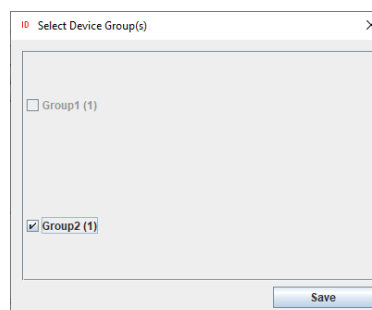
- Click on the “View .HWG+ Config file content” button
- If all Secure .HWG+ files settings are correct, “Close” the Visualize HWG+ file window



- Click on the “Select Device Group(s)” button to choose the MFP that the above chosen HWG+ file should be applied to



- “Select Group 2” which in this example contains MP C2004ex with IP address = 10.10.30.142
- Click “Save”

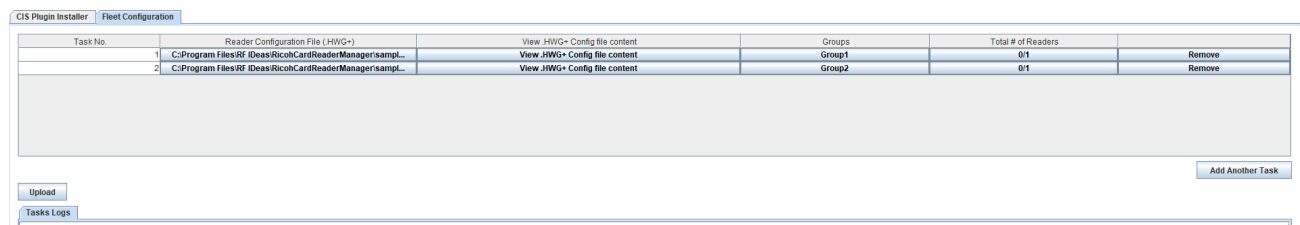


4. Configure the rf IDEAS Remote Card Reader Manager for Ricoh

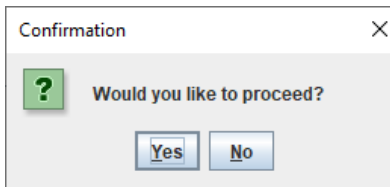
4.2 Multi-Device / Fleet Configuration

4.2.6 Program Readers or Groups of Readers

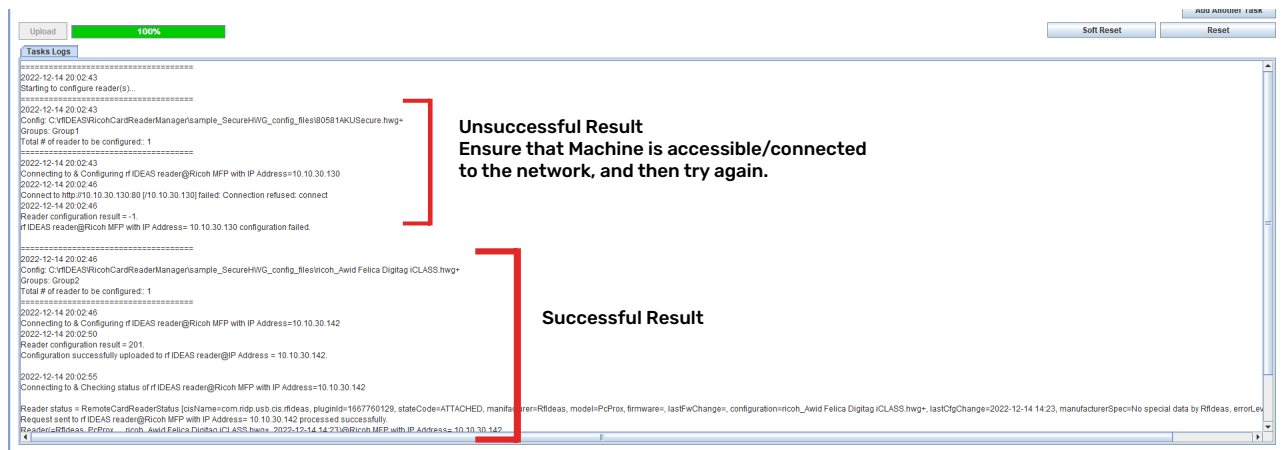
- See the Group2 assignment to the task bar
- Click the "Upload" button to upload the HWG+ files



- Click "Yes" to activate Fleet reader Configuration.



Log File Responses

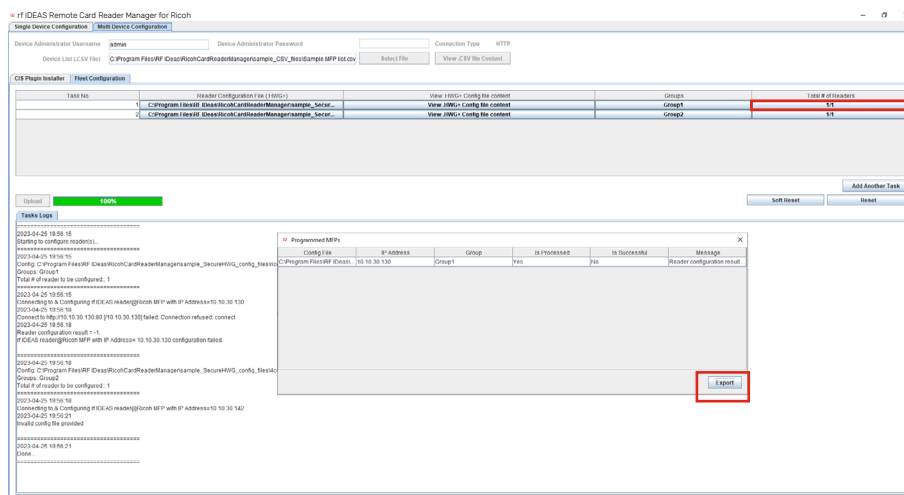


4. Configure the rf IDEAS Remote Card Reader Manager for Ricoh

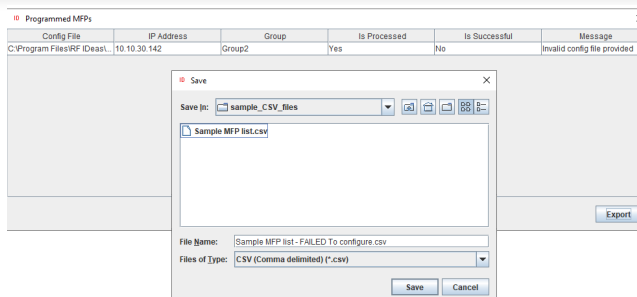
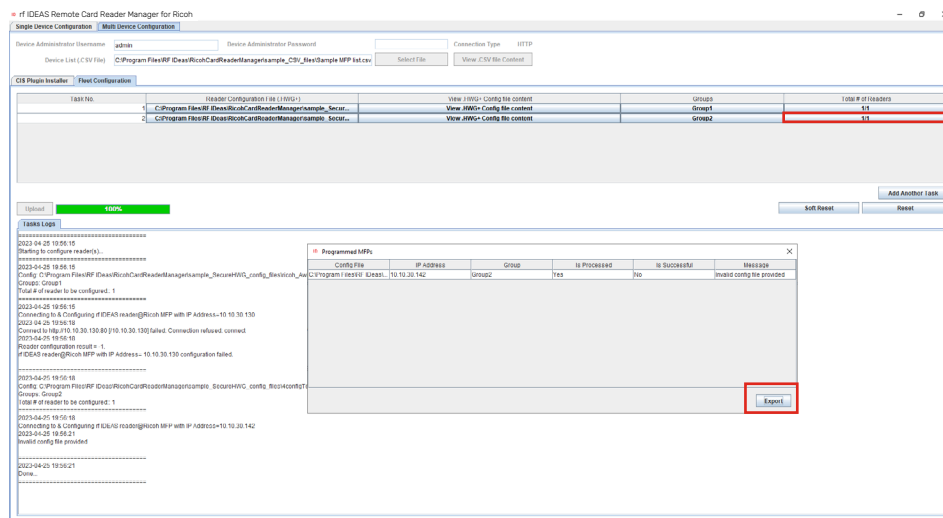
4.2 Multi-Device / Fleet Configuration

4.2.6 Program Readers or Groups of Readers

- To export results of your Task No. 1 fleet configuration, click the button under Total # of Readers column, in the Task No. 1 row (n/n).
- Click the “Export” button in the pop up window.



- To export results of your Task No. 2 fleet configuration, click the button under Total # of Readers column, in the Task No. 2 row (n/n).
- Click the “Export” button in the pop up window.



5. Have Additional Questions/Need Assistance?

Tech Support

[Click here](#) to submit a help request to rf IDEAS Tech Support.

Troubleshooting FAQs

[Click here](#) access Troubleshooting FAQs.

rf IDEAS Knowledge Base

<https://knowledgebase.rfideas.com/>



rf IDEAS® and WAVE ID® are registered trademarks of rf IDEAS, Inc. Trademarks not belonging to rf IDEAS are property of their respective companies.

©May 15th 2023 rf IDEAS, Inc. All rights reserved. Products are subject to change without notice.

425 N. Martingale Road, Suite 1680 Schaumburg, IL 60173 // Toll Free: (866) 439-4884 // Voice: (847) 870-1723 Fax: (847) 483-1129 // Email: sales@rfideas.com // rfideas.com